

APP CRS	Rwy Idg	7000
093°	TDZE	594
	Apt Elev	607

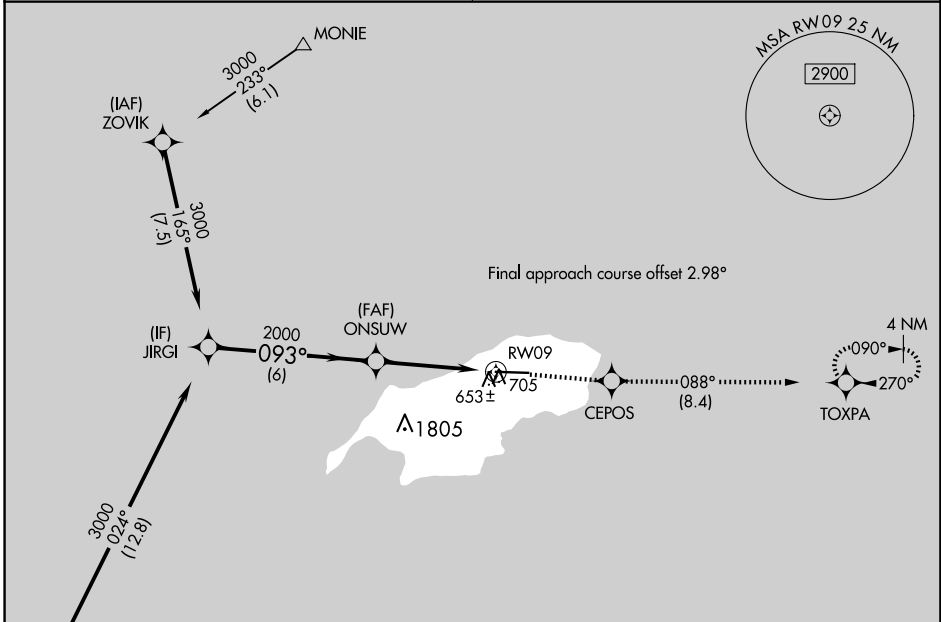
RNAV (GPS) RWY 9

BENJAMIN TAISACAN MANGLONA INTL (GRO)(PGRO)

▼ Circling NA south of Rwy 9-27. DME/DME RNP-0.3 NA. When local altimeter setting not received, use Andersen AFB altimeter setting and increase all MDA 320 feet, increase LNAV Cat C, D visibility 7/8 mile, Circling Cat C, D visibility 3/4 mile. VDP NA when using Andersen AFB altimeter setting.

MISSED APPROACH: Climb to 3000 direct CEPOS and on track 088° to TOXPA and hold.

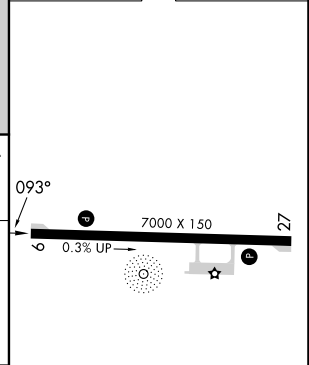
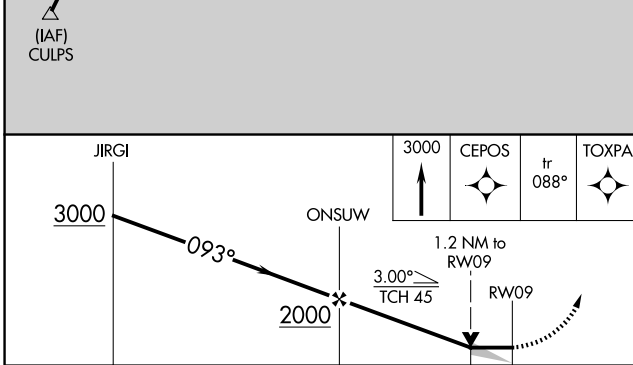
GUAM CERAP 120.5 263.0	CTAF 123.6
----------------------------------	----------------------



PAC, 20 FEB 2025 to 17 APR 2025

PAC, 20 FEB 2025 to 17 APR 2025

ELEV 607	D TDZE 594
----------	-------------------



CATEGORY	A	B	C	D
LNAV MDA	1000-1	406 (400-1)	1000-1 1/8	406 (400-1 1/8)
C CIRCLING	1000-1 393 (400-1)	1060-1 453 (500-1)	1060-1 1/2 453 (500-1 1/2)	1160-2 553 (600-2)

REIL Rwy 9 **D**
MIRL Rwy 9-27 **D**

RNAV (GPS) RWY 9