

WAAS CH 56334 W15A	APP CRS 154°	Rwy Idg TDZE Apt Elev	4200 1378 1379
--	------------------------	-----------------------------	---

RNAV (GPS) RWY 15

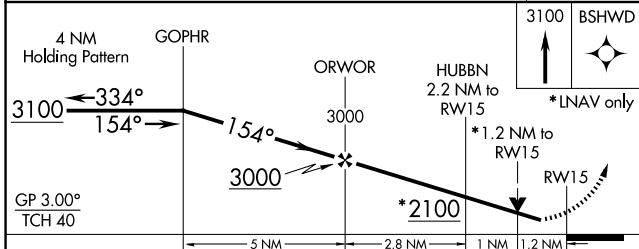
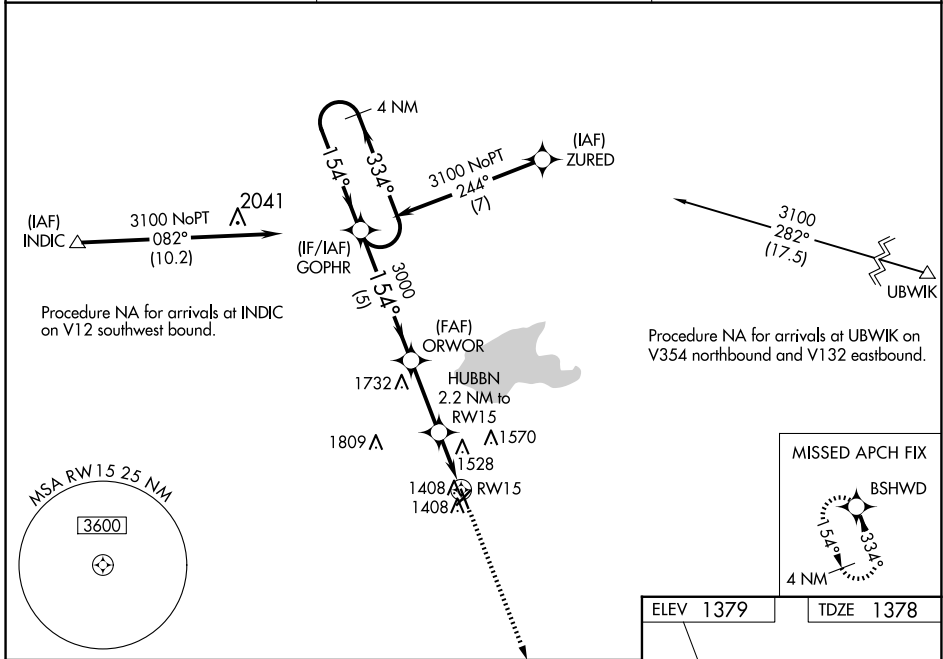
EL DORADO/CAPT JACK THOMAS MEML (EQA)

RNP APCH-GPS.

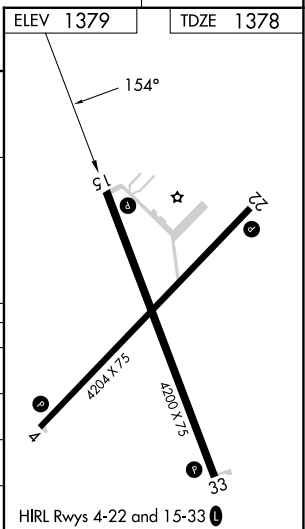
NA For uncompensated Baro-VNAV systems, LNAV/VNAV NA below -17°C or above 54°C. Rwy 15 helicopter visibility reduction below 3/4 SM NA. When local altimeter setting not received, use Colonel James Jabara altimeter setting and increase all DA 51 feet and all MDA 60 feet; increase LNAV/VNAV all Cats visibility 1/8 mile. Baro-VNAV and VDP NA when using Colonel James Jabara altimeter setting.

MISSED APPROACH:
Climb to 3100 direct BSHWD and hold.

AWOS-3P 120.875	WICHITA APP CON 134.8 269.1	UNICOM 122.8 (CTAF)
---------------------------	---------------------------------------	-------------------------------



CATEGORY	A	B	C	D
LPV DA	1628-1	250 (300-1)		NA
LNAV/VNAV DA	1843-1 5/8	465 (500-1 5/8)		NA
LNAV MDA	1780-1	402 (500-1)		NA
C CIRCLING	1820-1 441 (500-1)	1960-1 581 (600-1)		NA



NC-2, 20 FEB 2025 to 20 MAR 2025

NC-2, 20 FEB 2025 to 20 MAR 2025