

APP CRS	Rwy Idg	2943
094°	TDZE	818
	Apt Elev	818

RNAV (GPS) RWY 9

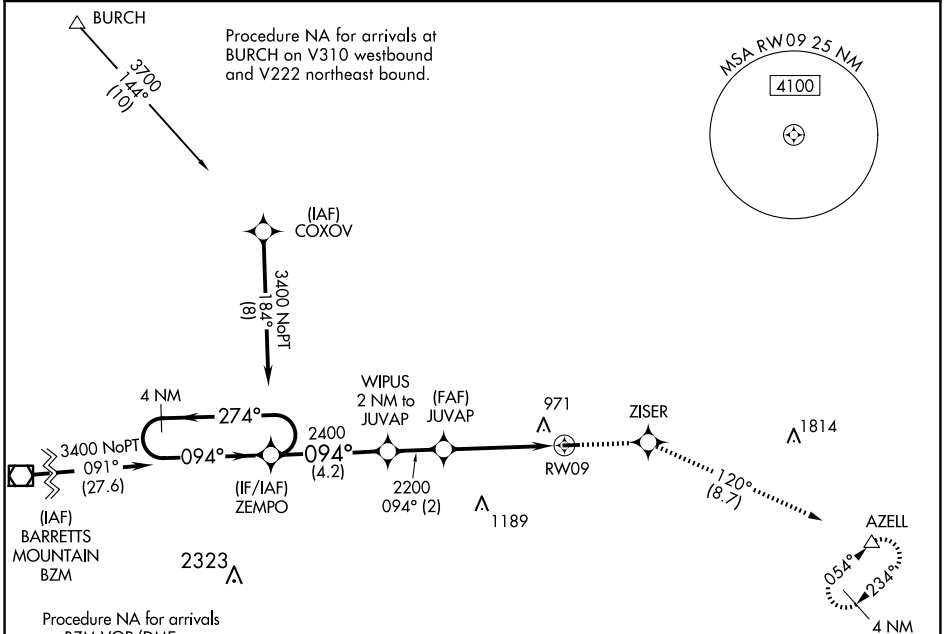
TWIN LAKES (8A7)

RNP APCH.

▽ Use Davidson County Exec altimeter setting; when not received, use Smith Reynolds altimeter setting and increase all MDA 40 feet. Procedure NA at night.
▲ NA Rwy 9 helicopter visibility reduction below 1 SM NA.

MISSED APPROACH: Climb to 3000 direct ZISER and on track 120° to AZELL and hold.

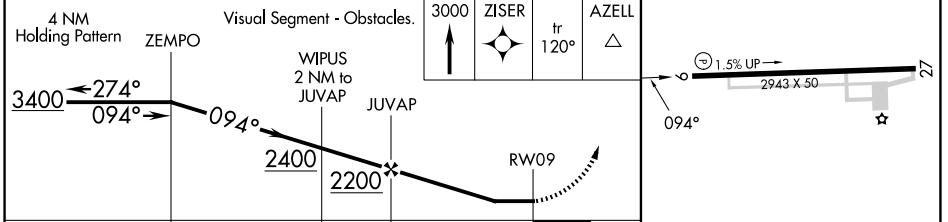
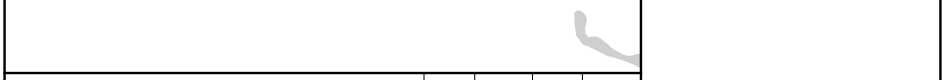
EXX AWOS-3 119.825	GREENSBORO APP CON 124.35 269.225	UNICOM 122.7 (CTAF)
------------------------------	---------------------------------------------	-------------------------------



SE-2, 20 FEB 2025 to 20 MAR 2025

SE-2, 20 FEB 2025 to 20 MAR 2025

ELEV 818	TDZE 818
----------	----------



CATEGORY	A	B	C	D
LNAV MDA	1320-1	502 (600-1)	NA	
CIRCLING	1380-1 562 (600-1)	1400-1 582 (600-1)	NA	

IIRL Rwy 9-27