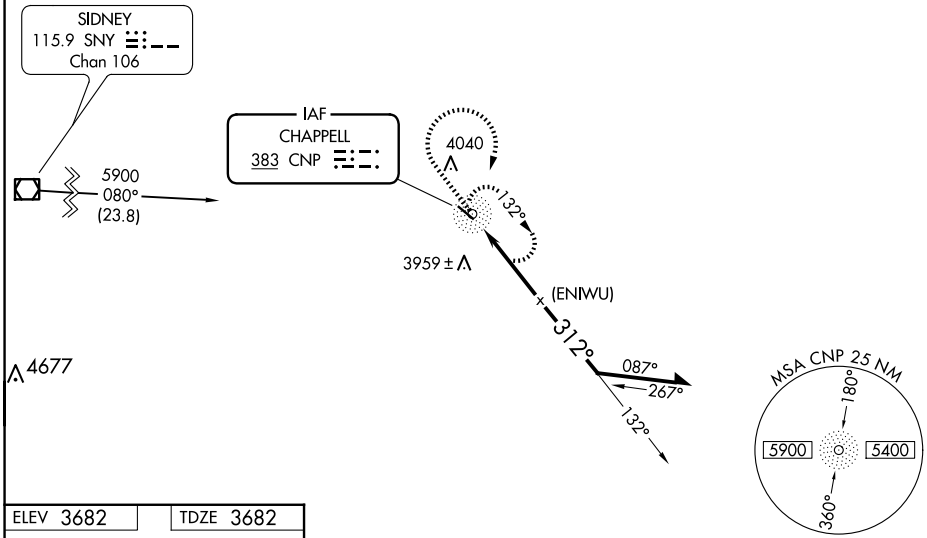


NDB CNP 383	APP CRS 312°	Rwy Idg TDZE Apt Elev	3870 3682 3682
-----------------------	------------------------	-----------------------------	---

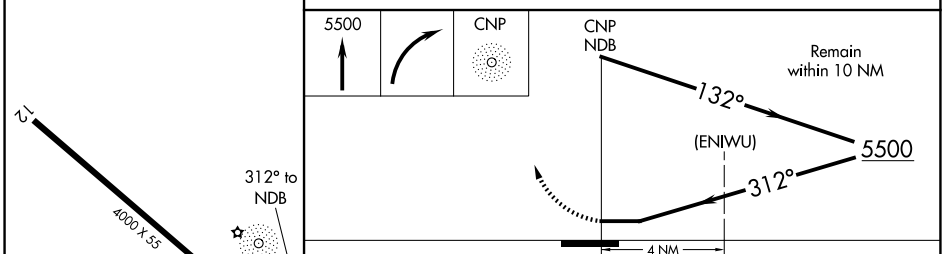
NDB or GPS RWY 30

BILLY G RAY FLD (CNP)

<p>NA Use Sidney altimeter setting, if not received, use Scottsbluff altimeter setting.</p>	<p>MISSED APPROACH: Climb to 5500 then right turn direct CNP NDB and hold.</p>
<p>DENVER CENTER 118.475 225.4</p>	<p>CTAF 122.9</p>



ELEV 3682	TDZE 3682
-----------	-----------



CATEGORY	A	B	C	D
S-30	4460-1 778 (800-1)	4460-1¼ 778 (800-1¼)	4460-2¼ 778 (800-2¼)	4460-2½ 778 (800-2½)
CIRCLING	4540-1 858 (900-1)	4540-1¼ 858 (900-1¼)	4540-2½ 858 (900-2½)	4600-3 918 (1000-3)
SCOTTSBLUFF ALTIMETER SETTING MINIMUMS				
S-30	4520-1 838 (900-1)	4520-1¼ 838 (900-1¼)	4520-2½ 838 (900-2½)	4520-2¾ 838 (900-2¾)
CIRCLING	4600-1¼ 918 (1000-1¼)	4600-2¾ 918 (1000-2¾)	4680-3 998 (1000-3)	

MIRL Rwy 12-30
CHAPPELL, NEBRASKA
Amdt 2C 25MAR21

41°05'N-102°28'W

NDB or GPS RWY 30

BILLY G RAY FLD (CNP)

NC-2, 20 FEB 2025 to 20 MAR 2025

NC-2, 20 FEB 2025 to 20 MAR 2025