

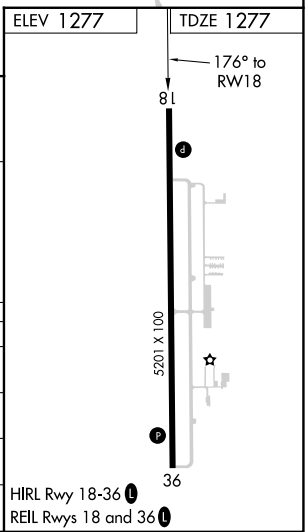
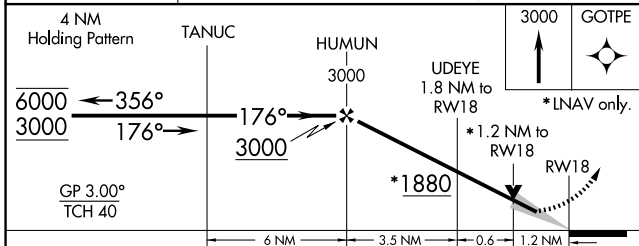
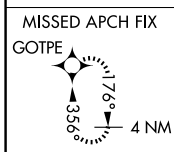
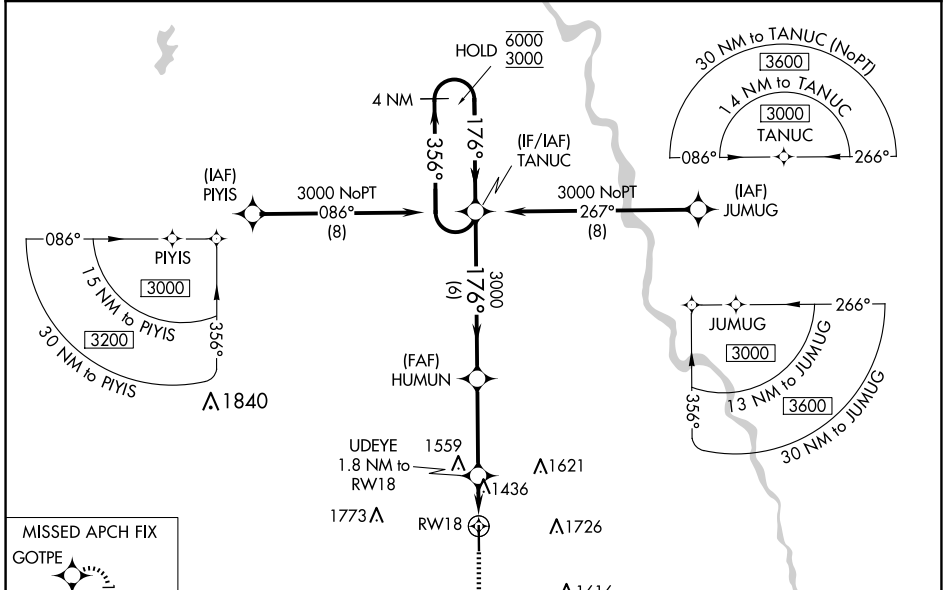
WAAS CH 93804 W18A	APP CRS 176°	Rwy ldg TDZE Apt Elev	5201 1277 1277
--	------------------------	-----------------------------	---

RNAV (GPS) RWY 18

WELLINGTON MUNI (E.G.T)

RNP APCH.	Baro-VNAV and VDP NA when using Wichita Dwight D Eisenhower Nil altimeter setting. For uncompensated Baro-VNAV systems, LNAV/VNAV NA below -17°C or above 54°C. When local altimeter setting not received, use Wichita Dwight D Eisenhower Nil altimeter setting: increase LPV DA to 1531 feet; increase LNAV/VNAV DA to 1776 feet; increase all MDAs 60 feet and LNAV Cats C/D visibility 1/8 SM and Circling Cats C/D visibility 1/4 SM.	MISSED APPROACH: Climb to 3000 direct GOTPE and hold.
-----------	--	---

AWOS-3P 118.875	WICHITA APP CON 134.85	UNICOM 122.8 (CTAF)
---------------------------	----------------------------------	-------------------------------



CATEGORY	A	B	C	D
LPV DA	1477-1		200 (200-1)	
LNAV/VNAV DA	1722-1 3/8		445 (500-1 3/8)	
LNAV MDA	1700-1	423 (500-1)	1700-1 1/4	423 (500-1 1/4)
C CIRCLING	1760-1	483 (500-1)	2040-2 1/4 763 (800-2 1/4)	2140-2 3/4 863 (900-2 3/4)

NC-2, 20 FEB 2025 to 20 MAR 2025

NC-2, 20 FEB 2025 to 20 MAR 2025