

APP CRS	Rwy Idg	<b>2077</b>
<b>008°</b>	TDZE	<b>181</b>
	Apt Elev	<b>181</b>

# RNAV (GPS) RWY 1

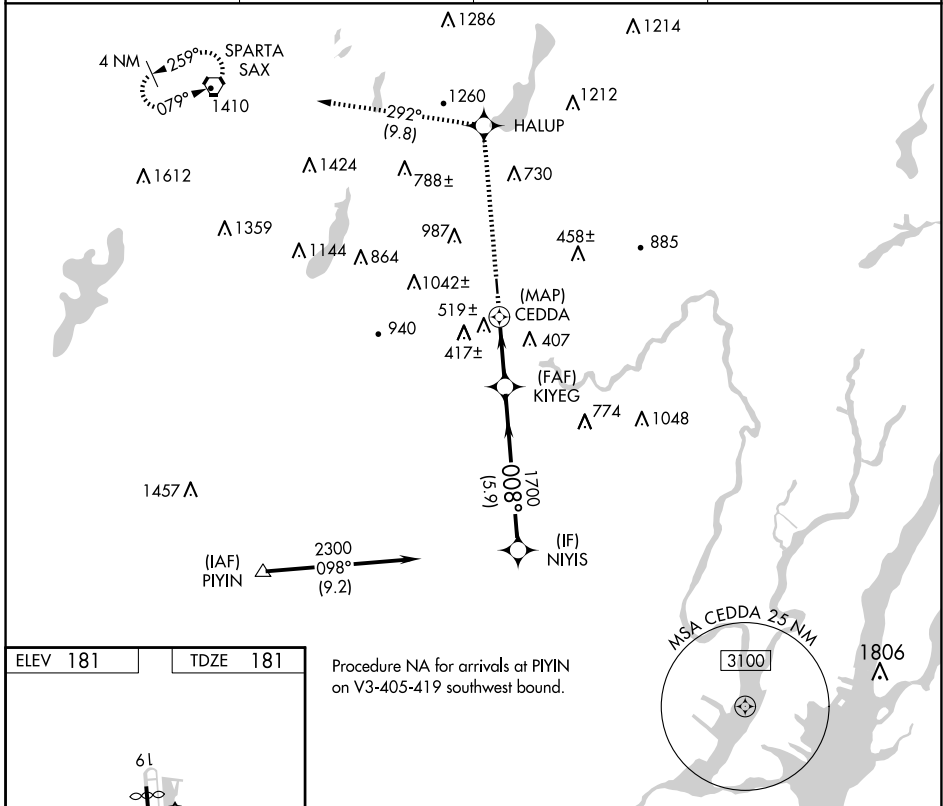
LINCOLN PARK (NØ7)

RNP APCH.

**▼** Rwy 1 helicopter visibility reduction below 1 SM NA.  
**▲** NA Use Teterboro altimeter setting. Procedure NA at night.

MISSED APPROACH: Climb to 3000 direct HALUP and on 292° track to SAX VORTAC and hold.

TEB D-ATIS <b>114.2 132.85</b>	NEWARK APP CON <b>127.6 379.9</b>	GCO <b>121.725</b>	UNICOM <b>122.8</b> (CTAF) <b>Ø</b>
-----------------------------------	--------------------------------------	-----------------------	--

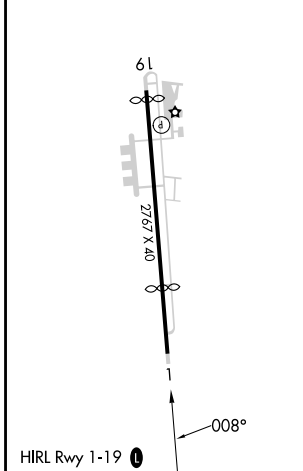


NE-2, 20 FEB 2025 to 20 MAR 2025

NE-2, 20 FEB 2025 to 20 MAR 2025

ELEV 181	TDZE 181
----------	----------

Procedure NA for arrivals at PIYIN on V3-405-419 southwest bound.



3000	↑ HALUP	292° tr	SAX	NIYIS
				2300
	CEDDA	KIYEG	1700	
		4.00° TCH 30		
	1 NM	2.5 NM	5.9 NM	
CATEGORY	A	B	C	D
LNAV MDA	860-1¼ 679 (700-1¼)		NA	
<b>☑</b> CIRCLING	1260-1¼ 1079 (1100-1¼)		NA	