

WAAS CH 90117 W25A	APP CRS 254°	Rwy Idg TDZE Apt Elev	7281 1475 1478
--	------------------------	-----------------------------	---

RNAV (GPS) RWY 25L

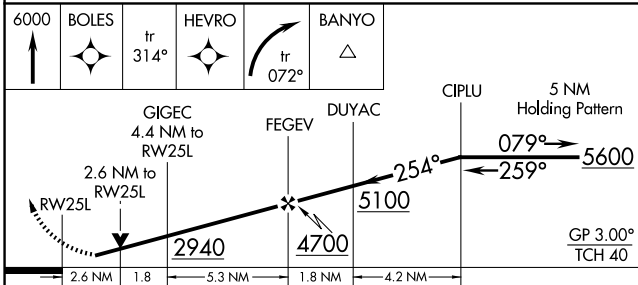
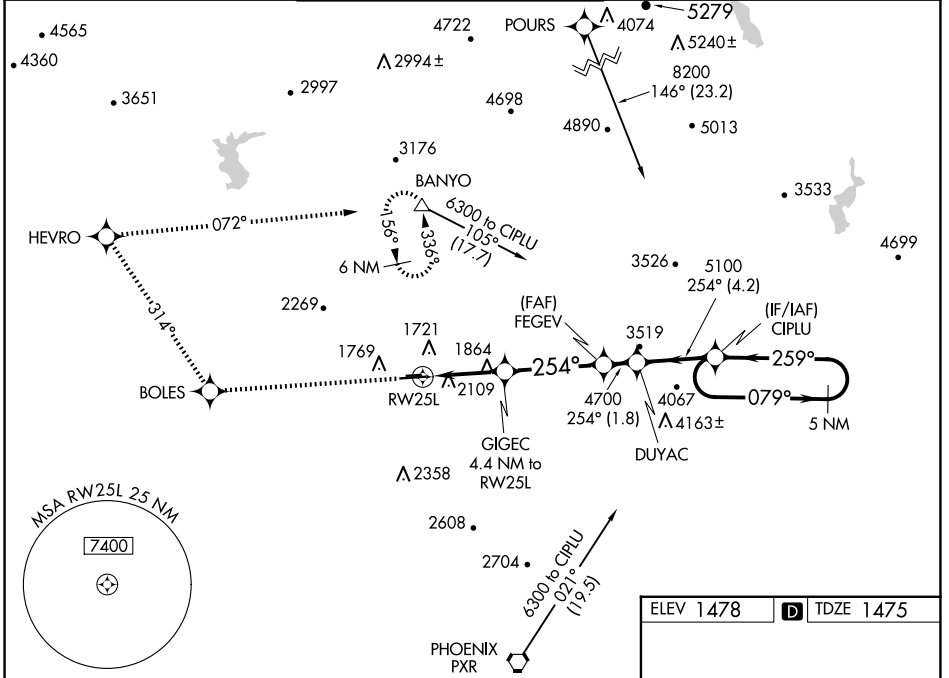
PHOENIX DEER VALLEY (DVT)

RNP APCH - GPS.

⚠ When VGSI inop, Circling to Rwy 25R NA at night. Circling NA north of Rwy 7R-25L at night. When local altimeter setting not received, use Scottsdale altimeter setting; increase LPV all Cats DA to 1877 feet and LPV all Cats visibility 1/8 SM. Increase all MDA 40 feet and Circling Cats B visibility 1/4 SM. Rwy 25L helicopter visibility reduction below 3/4 SM NA. VDP NA when using Scottsdale altimeter setting.

MISSED APPROACH: Climb to 6000 direct BOLES and on track 314° to HEVRO and right turn on track 072° to BANYO and hold.

ATIS 126.5	PHOENIX APP CON 120.7 239.0	DEER VALLEY TOWER * 118.4 (070°-250°) (CTAF) 120.2 (251°-069°)	GND CON 121.8	CLNC DEL 123.9	UNICOM 122.95
----------------------	---------------------------------------	--	-------------------------	--------------------------	-------------------------



ELEV 1478	TDZE 1475
-----------	-----------

MIRL Rwy 7L-25R and 7R-25L
REIL Rwy 7L, 7R, 25L, and 25R

CATEGORY	A	B	C	D
LPV DA	1850-1 1/4 375 (400-1 1/4)			
LNNAV MDA	2360-1 1/4 885 (900-1 1/4)	2360-2 3/4 885 (900-2 3/4)	2360-3 885 (900-3)	
CIRCLING	2400-1 1/4 922 (1000-1 1/4)	2420-1 1/4 942 (1000-1 1/4)	2580-3 1102 (1200-3)	2700-3 1222 (1300-3)

SW-4, 20 FEB 2025 to 20 MAR 2025

SW-4, 20 FEB 2025 to 20 MAR 2025