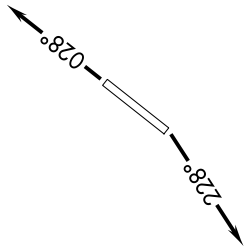


SW-4, 20 FEB 2025 to 20 MAR 2025

**TOP ALTITUDE:
ASSIGNED BY ATC**



DEPARTURE ROUTE DESCRIPTION

TAKEOFF RUNWAY 3: Climb heading 028° or as assigned by ATC, thence. . . .

TAKEOFF RUNWAY 21: Climb heading 228° or as assigned by ATC, thence. . . .

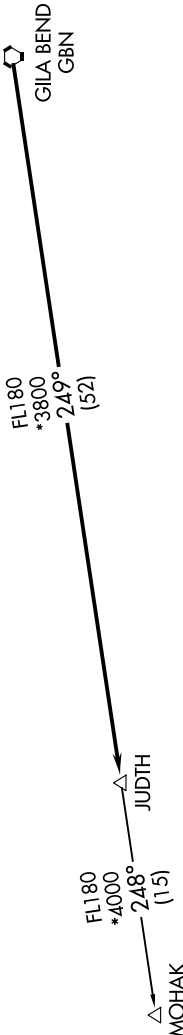
. . . . expect RADAR vectors to GBN VORTAC, then on track 249° to JUDTH, then on (transition). Maintain ATC assigned altitude, expect filed altitude 3 minutes after departure.

MOHAK TRANSITION (JUDTH7..MOHAK)

- NOTE: RNAV 1.
- NOTE: Turboprops and turboprops only.
- NOTE: RADAR required.
- NOTE: GPS required.
- NOTE: Aircraft departing KGEU and KGYR ATC assigned only.

TAKEOFF MINIMUMS
Rwys 3, 21: Standard.

ATIS 118.35
GND CON 121.7
GOODYEAR TOWER * 120.1 239.3
LUKE DEP CON * 125.45 263.125
PHOENIX DEP CON 120.7 239.0



NOTE: Chart not to scale.

SW-4, 20 FEB 2025 to 20 MAR 2025