

WAAS CH <b>70428</b> <b>W35A</b>	APP CRS <b>355°</b>	Rwy Idg TDZE Apt Elev	<b>4001</b> <b>576</b> <b>577</b>
--	------------------------	-----------------------------	---

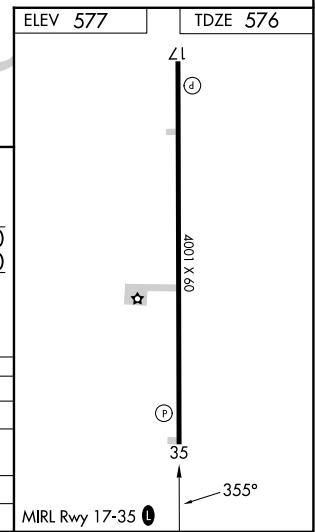
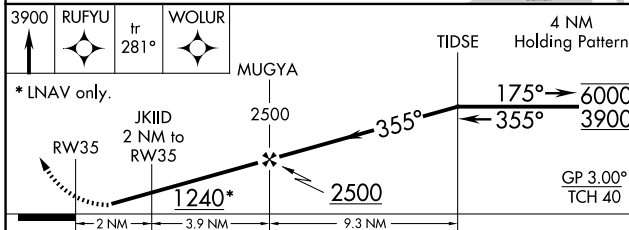
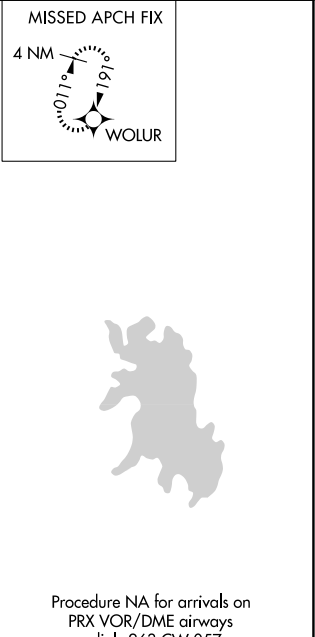
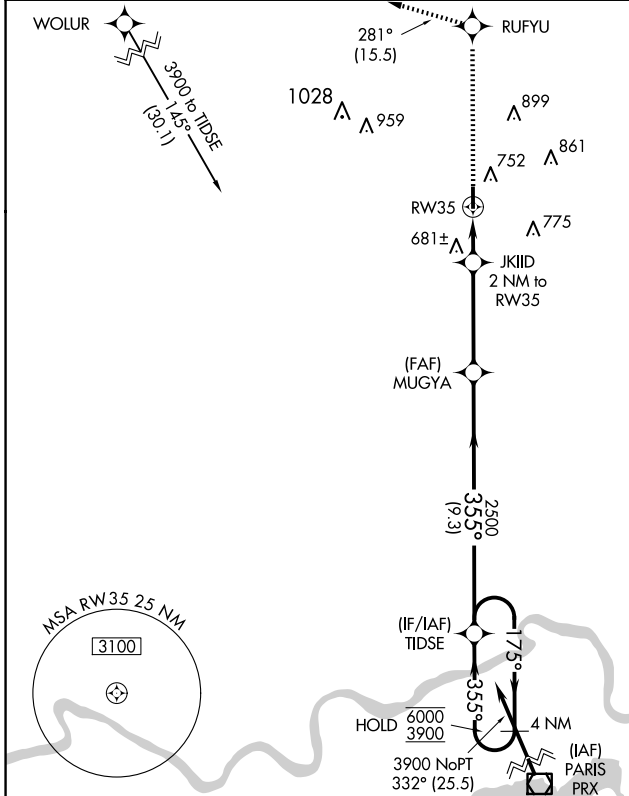
# RNAV (GPS) RWY 35

ANTLERS MUNI (80F')

RNP APCH. MISSED APPROACH: Climb to 3900 direct RUFYU and on track 281° to WOLUR and hold.

NA Circling to Rwy 17 NA at night. Rwy 35 helicopter visibility reduction below 3/4 SM NA. Baro-VNAV NA. Use Paris altimeter setting; when not received, use Durant altimeter setting and increase LPV and LNAV/VNAV DA to 937 feet, increase all MDA 40 feet.

PRX AWOS-3PT <b>119.675</b>	FORT WORTH CENTER <b>124.875 370.95</b>	CTAF <b>122.9 0</b>
--------------------------------	--	------------------------



CATEGORY	A	B	C	D
LPV DA	911-1 1/8	335 (400-1 1/8)		NA
LNAV/VNAV DA	911-1 1/8	335 (400-1 1/8)		NA
LNAV MDA	1020-1	444 (500-1)		NA
CIRCLING	1140-1	563 (600-1)		NA

SC-1, 20 FEB 2025 to 20 MAR 2025

SC-1, 20 FEB 2025 to 20 MAR 2025