

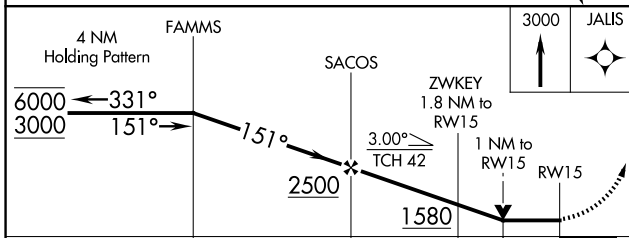
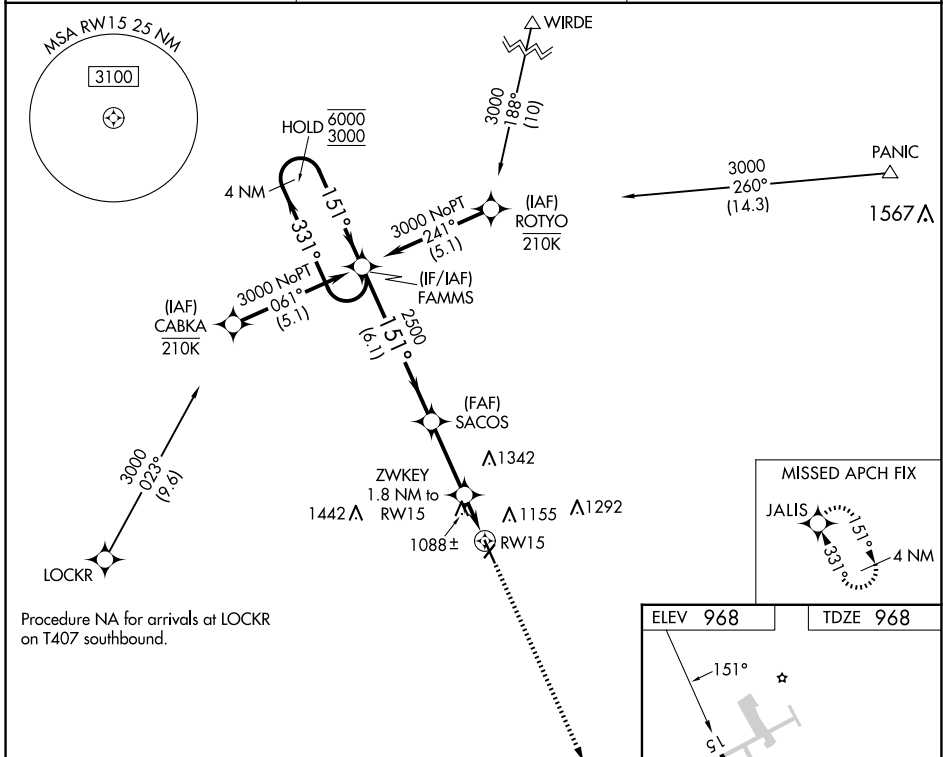
APP CRS	Rwy Idg	<b>5100</b>
<b>151°</b>	TDZE	<b>968</b>
	Apt Elev	<b>968</b>

# RNAV (GPS) RWY 15

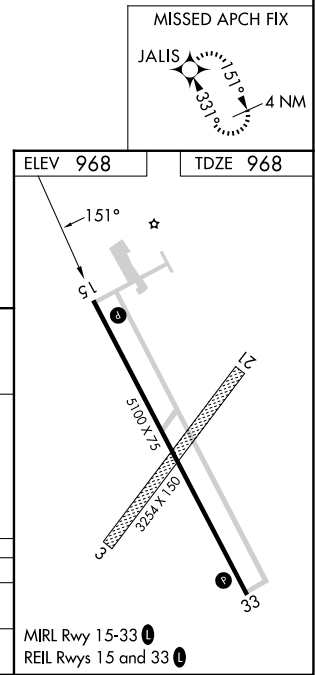
HARRY STERN (BWP)

RNP APCH - GPS.	MISSED APPROACH: Climb to 3000 direct JALIS and hold.
<p>▼ Circling NA to Rwy 3 and 21. Rwy 15 helicopter visibility reduction below 3/4 SM</p> <p>▲ NA. VDP NA when using FFM altimeter setting. When local altimeter setting not received, use FFM altimeter setting and increase all MDAs 80 feet and LNAV visibility Cat C and D 3/8 SM, and Circling visibility Cat C and D 1/4 SM.</p>	

AWOS-3 <b>127.875</b>	MINNEAPOLIS CENTER <b>127.35 278.3</b>	UNICOM <b>123.0 (CTAF) 0</b>
--------------------------	---	---------------------------------



CATEGORY	A	B	C	D
LNAV MDA	1340-1 372 (400-1)			
CIRCLING	1520-1	552 (600-1)	1660-2 692 (700-2)	1660-2 1/4 692 (700-2 1/4)



NC-1, 20 FEB 2025 to 20 MAR 2025

NC-1, 20 FEB 2025 to 20 MAR 2025