

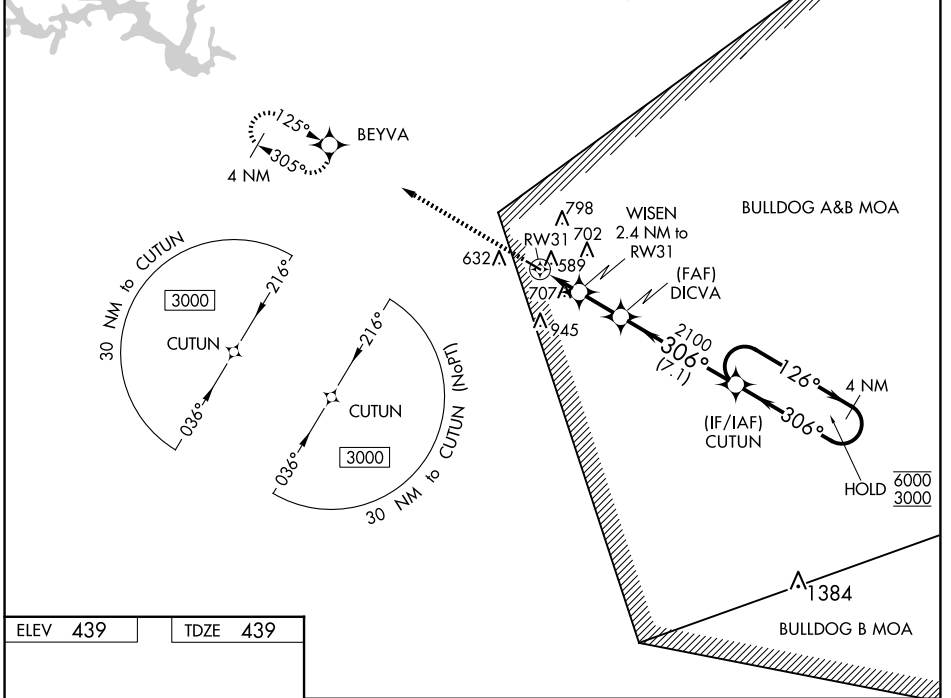
WAAS CH <b>72721</b> <b>W31A</b>	APP CRS <b>306°</b>	Rwy Idg TDZE <b>439</b> Apt Elev <b>439</b>	<b>5015</b>
--	------------------------	---	-------------

# RNAV (GPS) RWY 31

KAOLIN FLD (OKZ)

RNP APCH.	MISSED APPROACH: Climb to 2900 direct BEYVA and hold.
<p><b>▼</b> Rwy 31 helicopter visibility reduction below 3/4 SM NA.  <b>▲</b> For uncompensated Baro-VNAV systems, LNAV/VNAV NA below -15°C or above 54°C.</p>	

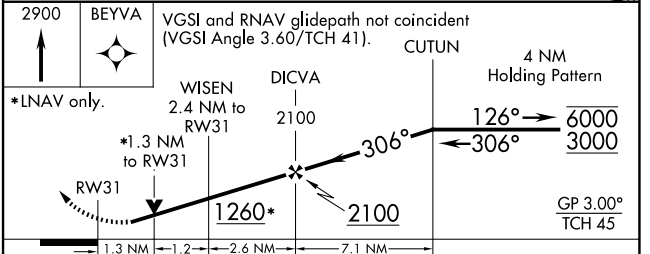
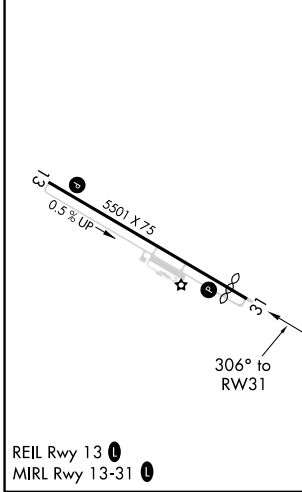
AWOS-3 <b>120.575</b>	ATLANTA APP CON ★ <b>124.2 279.6</b>	UNICOM <b>123.0 (CTAF) 0</b>
--------------------------	---	---------------------------------



SE-4, 20 FEB 2025 to 20 MAR 2025

SE-4, 20 FEB 2025 to 20 MAR 2025

ELEV <b>439</b>	TDZE <b>439</b>
-----------------	-----------------



CATEGORY	A	B	C	D
LPV DA	738-7/8	299 (300-7/8)		NA
LNAV/VNAV DA	848-1 1/8	409 (500-1 1/8)		NA
LNAV MDA	960-1	521 (600-1)	960-1 1/2 521 (600-1 1/2)	NA
<b>C</b> CIRCLING	1000-1 561 (600-1)	1120-1 681 (700-1)	1240-2 1/4 801 (900-2 1/4)	NA