

(ELOEL3.ELOEL) 21112

ELOEL THREE DEPARTURE (RNAV)

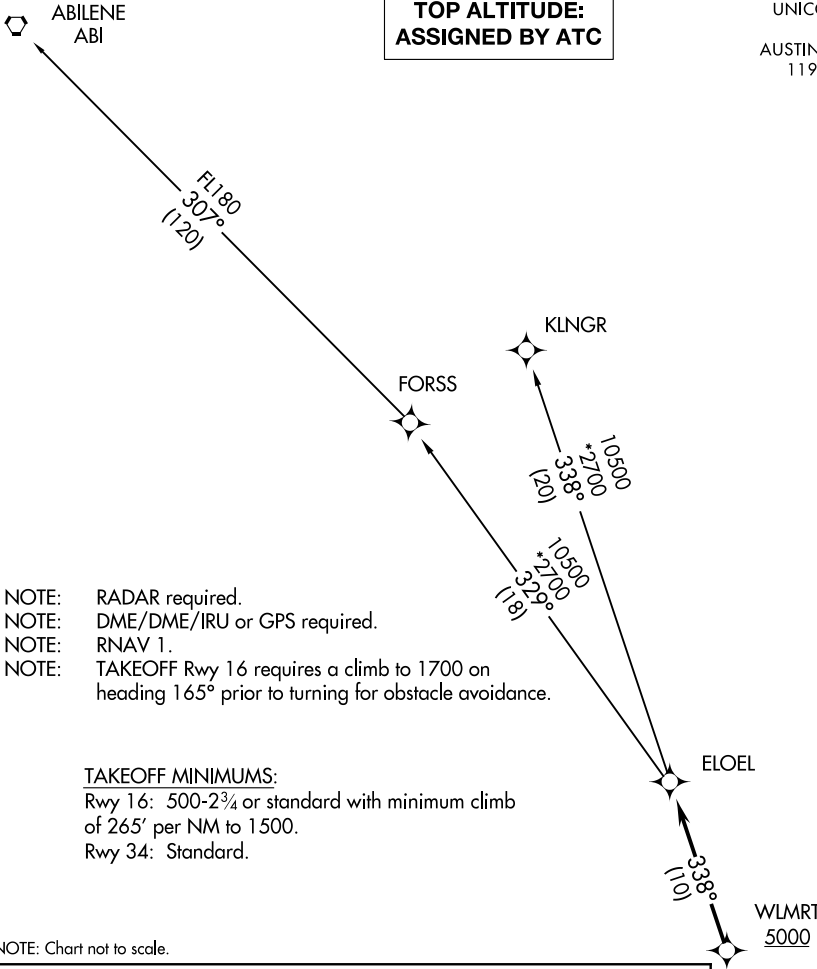
AL-6677 (FAA)

LAKEWAY AIRPARK (3R9)

LAKEWAY, TEXAS

**TOP ALTITUDE:
ASSIGNED BY ATC**

UNICOM (CTAF)
123.0
AUSTIN DEP CON
119.0 370.85



- NOTE: RADAR required.
- NOTE: DME/DME/IRU or GPS required.
- NOTE: RNAV 1.
- NOTE: TAKEOFF Rwy 16 requires a climb to 1700 on heading 165° prior to turning for obstacle avoidance.

TAKEOFF MINIMUMS:

Rwy 16: 500-2¾ or standard with minimum climb of 265' per NM to 1500.
 Rwy 34: Standard.

NOTE: Chart not to scale.

DEPARTURE ROUTE DESCRIPTION

TAKEOFF RUNWAY 16: Climb on heading 165° to 1700, then as assigned by ATC for vectors to cross WLMRT at or above 5000, thence....

TAKEOFF RUNWAY 34: Climb on heading 345° or as assigned by ATC for vectors to cross WLMRT at or above 5000, thence....

... on track 338° to ELOEL, then on transition. Maintain altitude assigned by ATC. Expect filed altitude 10 minutes after departure.

- ABILENE TRANSITION (ELOEL3.ABI)
- FORSS TRANSITION (ELOEL3.FORSS)
- KLNGR TRANSITION (ELOEL3.KLNGR)



ELOEL THREE DEPARTURE (RNAV)

(ELOEL3.ELOEL) 22APR21

LAKEWAY, TEXAS

LAKEWAY AIRPARK (3R9)

SC-3, 20 FEB 2025 to 20 MAR 2025

SC-3, 20 FEB 2025 to 20 MAR 2025