

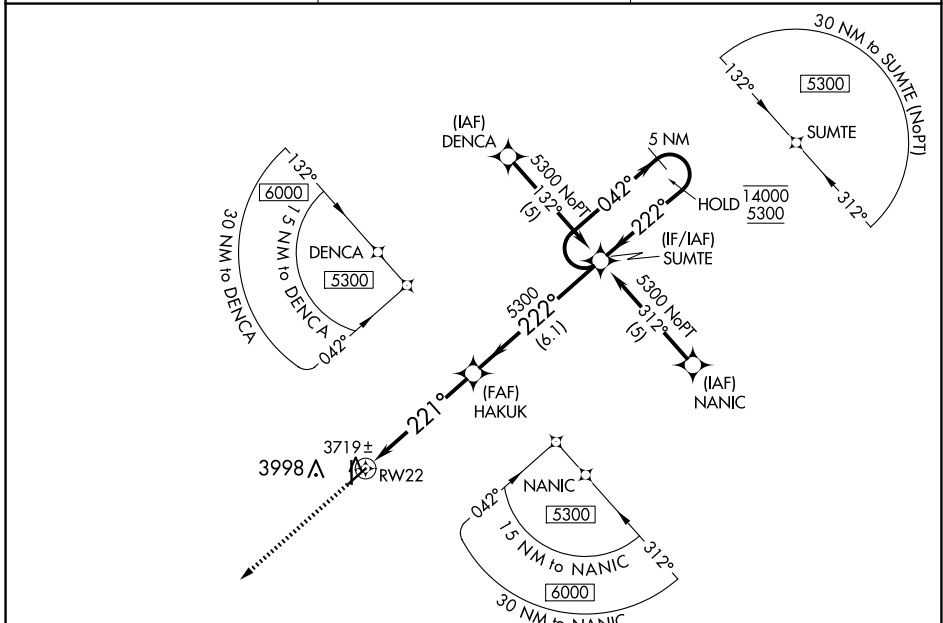
APP CRS 221°	Rwy Idg TDZE Apt Elev	4900 3615 3622
------------------------	-----------------------------	---

RNAV (GPS) RWY 22

ELKHART-MORTON COUNTY (EHA)

RNP APCH-GPS.	MISSED APPROACH: Climb to 6000 direct RIGGO and hold.
Rwy 22 helicopter visibility reduction below 3/4 SM NA.	

AWOS-3P 118.025	KANSAS CITY CENTER 134.0 257.625	UNICOM 122.8 (CTAF) 0
---------------------------	--	---------------------------------



NC-2, 20 FEB 2025 to 20 MAR 2025

NC-2, 20 FEB 2025 to 20 MAR 2025

ELEV 3622		TDZE 3615	
RIGGO 6000	HAKUK 5300	SUMTE 5300	5 NM Holding Pattern 14000 5300
RWY 22 5.2 NM		6.1 NM	
CATEGORY LNAV MDA	A 4100-1	B 485 (500-1)	C 4100-1 3/8 485 (500-1 3/8)
		D NA	MRL Rwy 17-35 and 4-22 0