

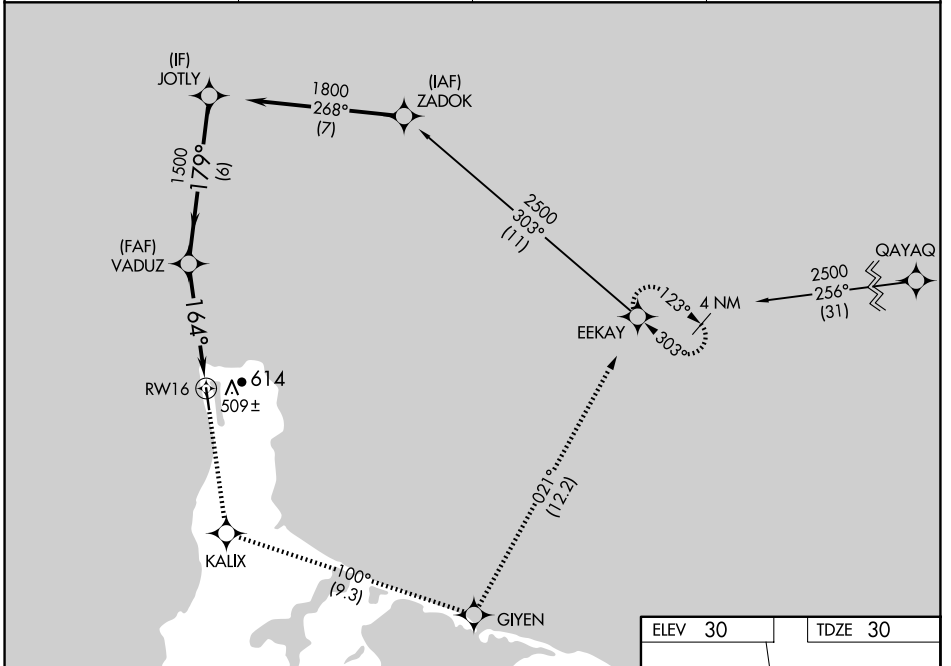
WAAS CH 86635 W16A	APP CRS 164°	Rwy ldg TDZE Apt Elev	4500 30 30
--	------------------------	-----------------------------	---------------------------------------

RNAV (GPS) RWY 16

GAMBELL (GAM) (PAGM)

RNP APCH - GPS.		MISSED APPROACH: Climb to 2500 direct KALIX then left turn on track 100° to GIYEN and on track 021° to EEKAY and hold.
<p>▼ Circling NA east of Rwy 16-34. For uncompensated Baro-VNAV systems, LNAV/VNAV NA below -20°C or above 54°C .</p> <p>⚠ -26°C</p>		

AWOS-3P 125.9	ANCHORAGE CENTER 132.2 281.4	NOME RADIO 122.0	CTAF 122.7
-------------------------	--	----------------------------	----------------------



AK, 20 FEB 2025 to 17 APR 2025

AK, 20 FEB 2025 to 17 APR 2025

