

WAAS CH 82135 W34A	APP CRS 344°	Rwy Idg TDZE Apt Elev	4500 29 30
--	------------------------	-----------------------------	---------------------------------------

RNAV (GPS) RWY 34

GAMBELL (GAM) (PAGM)

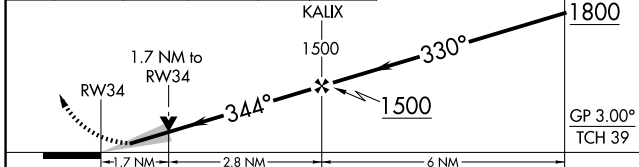
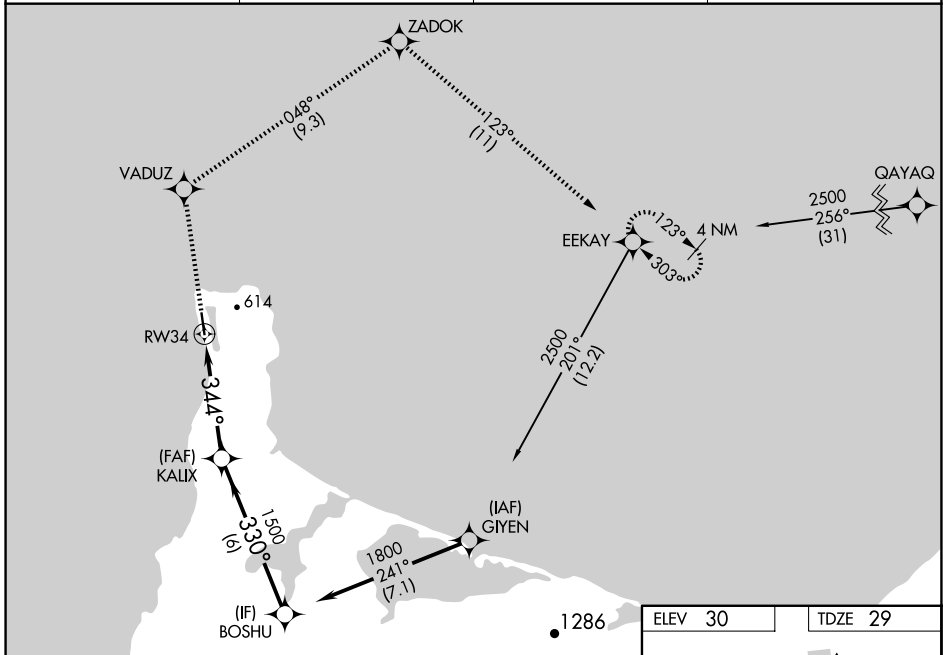
RNP APCH - GPS.

⚠ Circling NA east of Rwy 16-34. For uncompensated Baro-VNAV systems, LNAV/VNAV NA below -20°C or above 54°C. For inop ALS, increase LNAV/VNAV Cat A and B visibility to 1 1/4 SM. Inop table does not apply to LPV all Cats and LNAV Cats A and B visibilities.

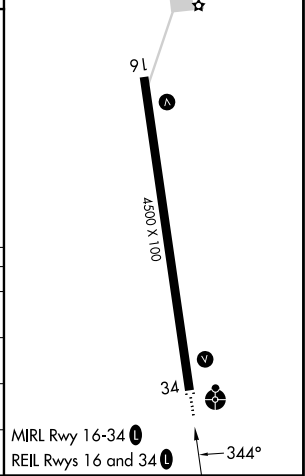
ODALS

⚠ MISSED APPROACH: Climb to 2500 direct VADUZ then right turn on track 048° to ZADOK and on track 123° to EEKAY and hold.

AWOS-3P 125.9	ANCHORAGE CENTER 132.2 281.4	NOME RADIO 122.0	CTAF 122.7 0
-------------------------	--	----------------------------	------------------------



ELEV 30	TDZE 29
---------	---------



CATEGORY	A	B	C	D
LPV DA		229-1	200 (200-1)	
LNAV/VNAV DA		459-1 1/8	430 (500-1 1/8)	
LNAV MDA	600-1	571 (600-1)	600-1 1/2	571 (600-1 1/2)
CIRCLING	600-1	570 (600-1)	600-1 1/8	660-2
			570 (600-1 1/8)	630 (700-2)

AK, 20 FEB 2025 to 17 APR 2025

AK, 20 FEB 2025 to 17 APR 2025