

| | |
|------------------------|------------------------|
| APP CRS 091° | Rwy Idg 4000 |
| | TDZE 836 |
| | Apt Elev 842 |

RNAV (GPS) RWY 9

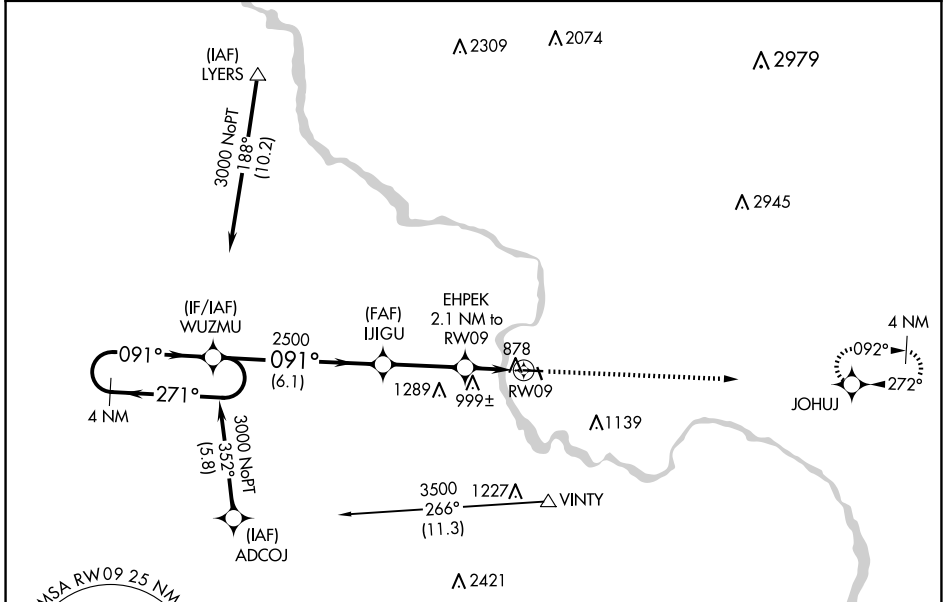
VINTON VETERANS MEML AIRPARK (VTI)

RNP APCH - GPS.

▼ Straight-in Rwy 9/ Circling Rwy 9 at night, operational VGSI required, remain on or above VGSI glidepath until threshold. Rwy 9 helicopter visibility reduction below 1 SM NA.
▲ When local altimeter setting not received, use Independence altimeter setting and increase all MDA 60 feet.

MISSED APPROACH: Climb to 3000 direct JOHUJ and hold.

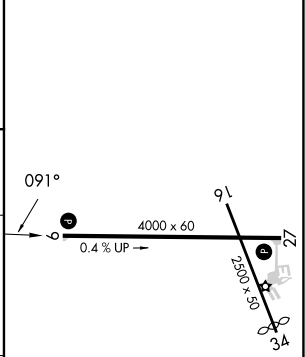
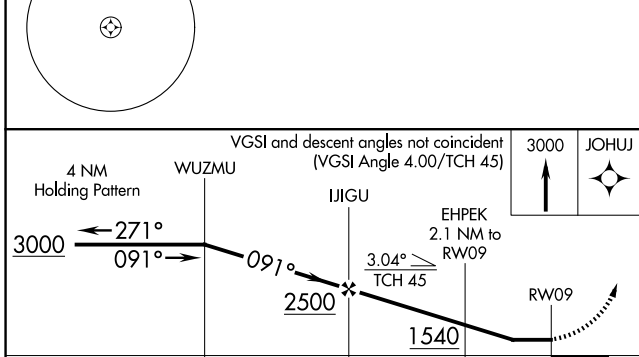
| | | |
|--------------------------|---|-------------------------------|
| AWOS-3 120.075 | CEDAR RAPIDS APP CON * 134.05 266.8 | UNICOM 122.8 (CTAF) |
|--------------------------|---|-------------------------------|



NC-3, 20 FEB 2025 to 20 MAR 2025

NC-3, 20 FEB 2025 to 20 MAR 2025

| | |
|----------|----------|
| ELEV 842 | TDZE 836 |
|----------|----------|



| CATEGORY | A | B | C | D |
|----------|-----------------------|-----------------------|----|---|
| LNVA MDA | 1260-1 | 424 (500-1) | NA | |
| CIRCLING | 1320-1 478 (500-1) | 1360-1 518 (600-1) | NA | |

REIL Rwy 9 and 27 ●
MIRL Rwy 9-27 ●