

VOR/DME PUC <b>115.5</b> Chan <b>102</b>	APP CRS <b>194°</b>	Rwy Idg TDZE Apt Elev <b>N/A</b> <b>N/A</b> <b>5915</b>
--	------------------------	--

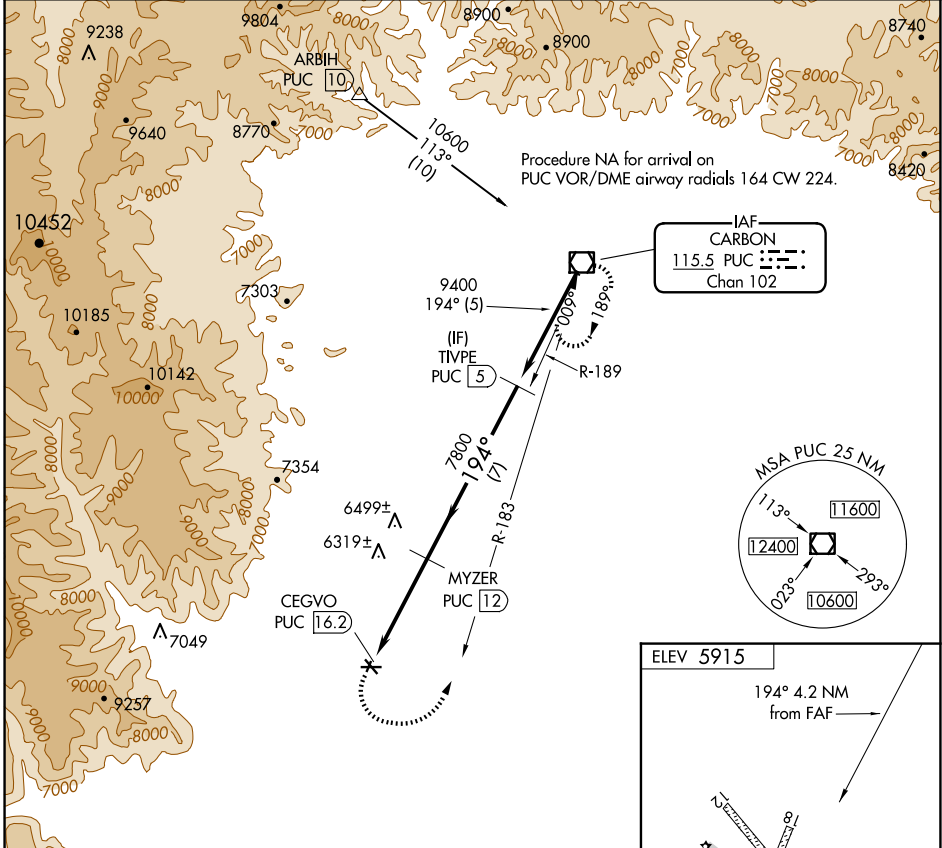
# VOR-B

HUNTINGTON MUNI (69V)

**NA** Rwy 8, 12, 26, 30 helicopter visibility reduction below 1 SM NA. DME required. Procedure NA at night. Use Price altimeter setting; when not received, procedure NA. Circling NA to Rwys 12-30 and 18-36.

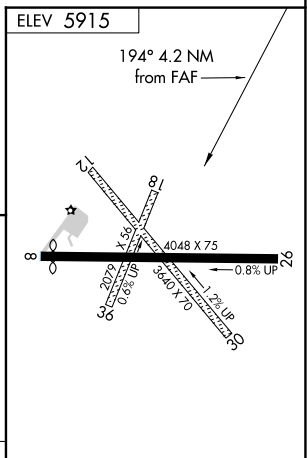
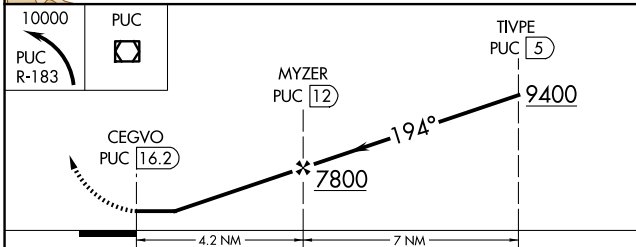
MISSED APPROACH: Climbing left turn to 10000 on PUC VOR/DME R-183 to PUC VOR/DME and hold.

PUC ASOS <b>135.425</b>	SALT LAKE CENTER <b>133.9 370.85</b>	UNICOM <b>122.8</b> (CTAF) <b>0</b>
----------------------------	---	--



SW-4, 20 FEB 2025 to 20 MAR 2025

SW-4, 20 FEB 2025 to 20 MAR 2025



CATEGORY	A	B	C	D
CIRCLING	6620-1	705 (800-1)	6800-2 <sup>3</sup> / <sub>4</sub> 885 (900-2 <sup>3</sup> / <sub>4</sub> )	NA