

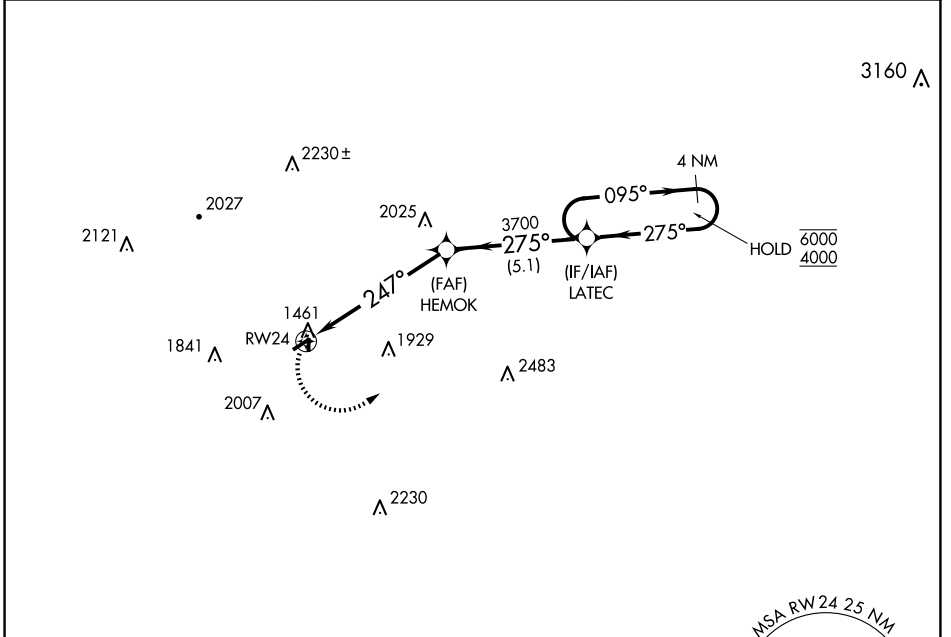
APP CRS 247°	Rwy Idg 3003
	TDZE 1439
	Apt Elev 1445

RNAV (GPS) RWY 24

PUNXSUTAWNEY MUNI (N35)

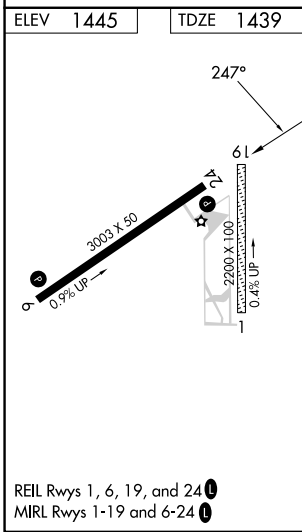
RNP APCH - GPS.	MISSED APPROACH: Climbing left turn to 4000 direct LATEC and hold.
<p>▼ Circling NA to Rwy 1 and 19. Rwy 24 helicopter visibility reduction below 3/4 SM NA. Use Dubois Rgnl altimeter setting.</p> <p>▲ NA</p>	

DUJ ASOS 119.025	CLEVELAND CENTER 126.725 291.65	UNICOM 123.0 (CTAF) 0
----------------------------	---	---------------------------------



NE-4, 20 FEB 2025 to 20 MAR 2025

NE-4, 20 FEB 2025 to 20 MAR 2025



4000	LATEC	VGSI and descent angles not coincident (VGSI Angle 4.00/TCH 40).	4 NM Holding Pattern
		HEMOK	LATEC
		RWY 24	HEMOK
		6 NM	5.1 NM
CATEGORY	A	B	C
LNAV MDA	2160-1	721 (800-1)	NA
CIRCLING	2180-1 735 (800-1)	2260-1 1/4 815 (900-1 1/4)	NA

