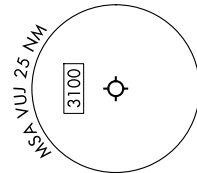


JOJO FIVE DEPARTURE (RNAV)

STANLY COUNTY (VUJ)
ALBEMARLE, NORTH CAROLINA

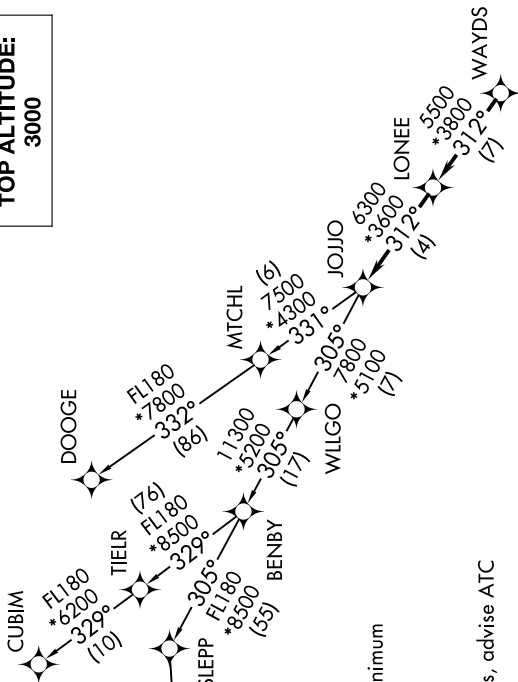
CHARLOTTE DEP CON
128.325 307.8
AWOS-3
128.175
CLNC DEL
121.75 254.375
GND CON
121.75 254.375
STANLY COUNTY TOWER★
126.275 (CTAF) 291.9

TOP ALTITUDE:
3000



NOTE: Chart not to scale.

SE-2, 20 FEB 2025 to 20 MAR 2025



RNAV 1 - DME/DME/IRU or GPS.
RADAR required.

NOONN
FL180 *6100
272° (68)
BFORE
FL180 *5100
272° (38)
SLEPP
FL180 *8500
305° (55)
BENBY
FL180 *3200
305° (17)
WILLGO
FL180 *3100
305° (7)
JOJO
FL180 *3600
312° (4)
LONEE
FL180 *3800
312° (7)
WAYDS

TAKEOFF MINIMUMS

Rwys 4L, 22R: NA-Environmental.
Rwy 22L: Standard.
Rwy 4R: 300-1/4 or standard with minimum climb of 315' per NM to 1000.

- NOTE: For turbo jets only.
- NOTE: If unable to accept climb rates, advise ATC on initial contact.
- NOTE: NOONN Transition ATC assigned only.
- NOTE: Upon reaching 10000 MSL, accelerate to and maintain 280K, if unable advise ATC.

DEPARTURE ROUTE DESCRIPTION

Climb on heading assigned by ATC, on RADAR vectors to WAYDS, then on depicted route to JOJO. Then on assigned transition. Maintain 3000, expect filed altitude within 10 minutes after departure.

- CUBIM TRANSITION (JOJO5.CUBIM)
- DOOGE TRANSITION (JOJO5.DOOGE)
- NOONN TRANSITION (JOJO5.NOONN)

SE-2, 20 FEB 2025 to 20 MAR 2025

JOJO FIVE DEPARTURE (RNAV)

ALBEMARLE, NORTH CAROLINA
STANLY COUNTY (VUJ)