

WAAS CH <b>77732</b> <b>W18A</b>	APP CRS <b>177°</b>	Rwy Idg TDZE Apt Elev	<b>4000</b> <b>1080</b> <b>1088</b>
----------------------------------------	------------------------	-----------------------------	-------------------------------------------

# RNAV (GPS) RWY 18

AMERY MUNI (AHH)

RNP APCH.

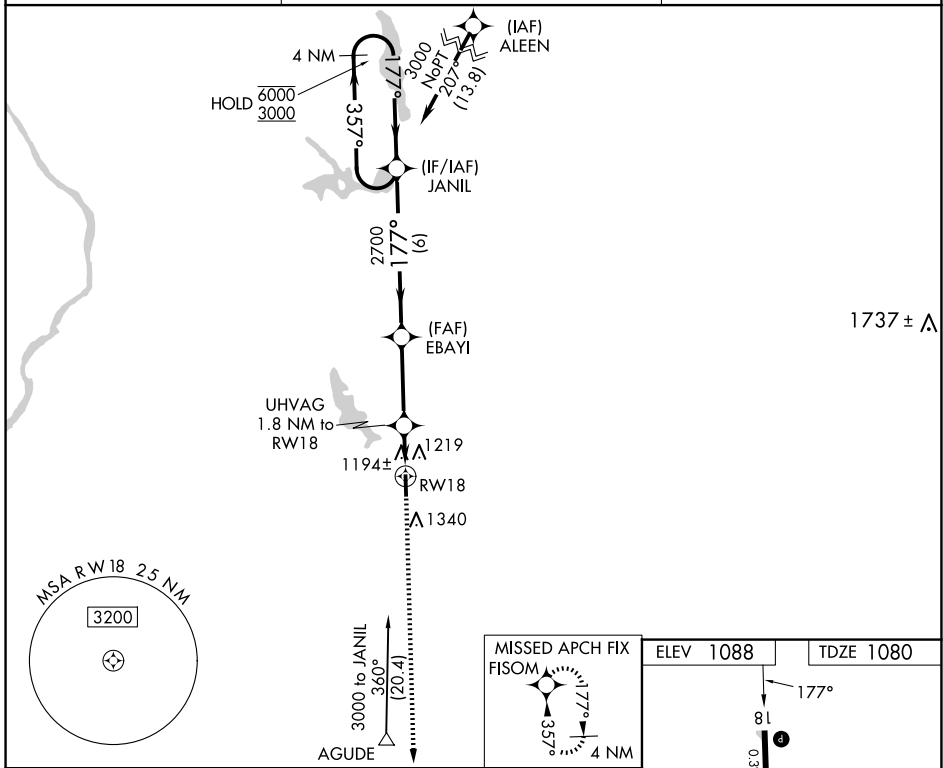
**NA** Rwy 18 helicopter visibility reduction below 3/4 SM NA. Use New Richmond altimeter setting; when not received, use Osceola altimeter setting and increase all MDAs 20 feet and Circling Cat C visibility 1/4 SM.

**MISSED APPROACH:**  
Climb to 3000 direct FISOM and hold.

RNH AWOS-3  
**120.0**

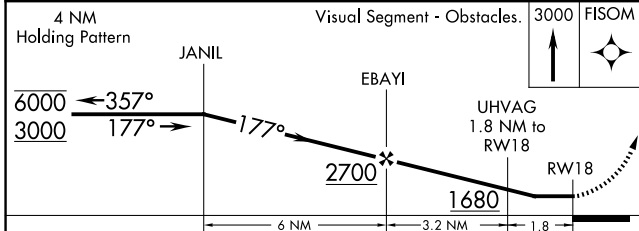
MINNEAPOLIS CENTER  
**125.3 335.6**

UNICOM  
**122.8 (CTAF) 0**

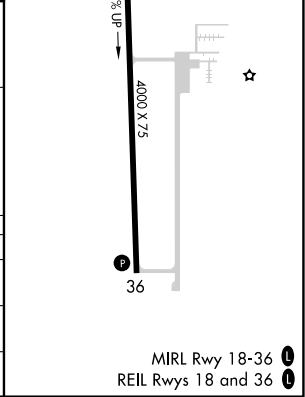


EC-3, 20 FEB 2025 to 20 MAR 2025

EC-3, 20 FEB 2025 to 20 MAR 2025



CATEGORY	A	B	C	D
LP MDA	1500-1	420 (500-1)	1500-1 1/4 420 (500-1 1/4)	NA
LNAV MDA	1600-1	520 (600-1)	1600-1 1/2 520 (600-1 1/2)	NA
<b>C</b> CIRCLING	1740-1	652 (700-1)	1740-1 3/4 652 (700-1 3/4)	NA



MIRL Rwy 18-36 0  
REIL Rwy 18 and 36 0