

RNAV (GPS) RWY 1

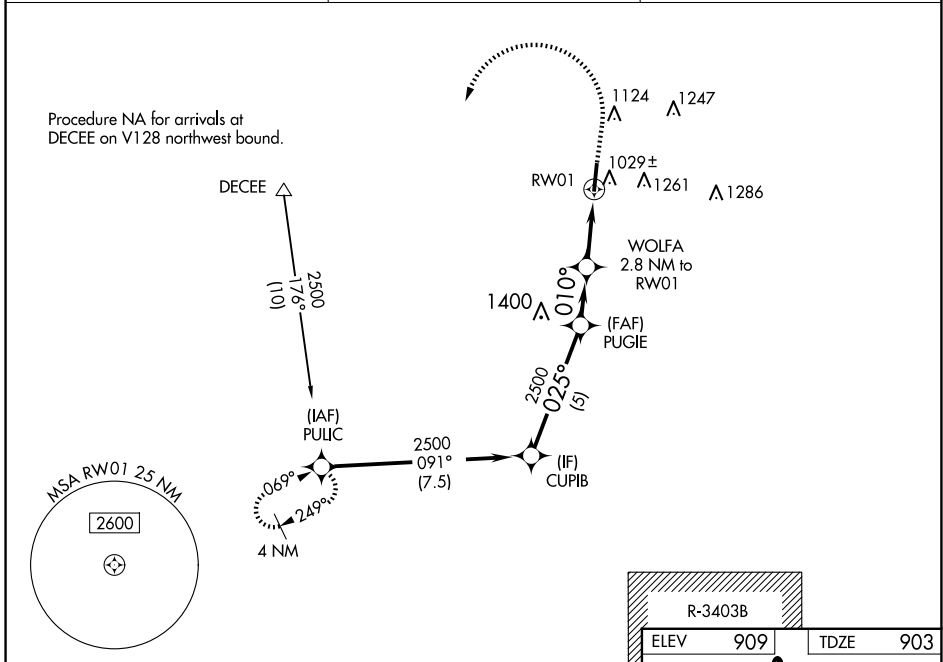
GREENSBURG MUNI (I34)

WAAS CH 62845 W01A	APP CRS 010°	Rwy Idg TDZE Apt Elev	5406 903 909
--	------------------------	-----------------------------	---

RNP APCH - GPS.
 ▽ Baro-VNAV NA. Use Columbus Muni altimeter setting, when not received, use Indianapolis Intl altimeter setting: increase LPV DA to 1269 feet; increase LNAV/VNAV DA to 1418 feet; increase all MDAs 40 feet and Circling visibility Cat C ¼ SM.

MISSED APPROACH: Climb to 1440 then climbing left turn to 2500 direct PULIC and hold.

BAK AWOS-3 119.75	INDIANAPOLIS APP CON 127.15	CTAF 122.9
-----------------------------	---------------------------------------	----------------------



EC-2, 20 FEB 2025 to 20 MAR 2025

EC-2, 20 FEB 2025 to 20 MAR 2025

R-3403B	ELEV 909	TDZE 903
---------	----------	----------

	CUPIB	PUGIE	WOLFA	RWY 1
	2500	2500	2.8 NM to RWY 1	1820
	GP 3.00° TCH 40	025°	010°	
	5 NM	2.1 NM	2.8 NM	
CATEGORY	A	B	C	D
LPV DA	1230-1	327 (400-1)		NA
LNAV/VNAV DA	1379-1⅓	476 (500-1⅓)		NA
LNAV MDA	1360-1	457 (500-1)	1360-1⅓ 457 (500-1⅓)	NA
CIRCLING	1540-1 631 (700-1)	1640-1 731 (800-1)	1640-2 731 (800-2)	NA

