

APP CRS	Rwy Idg	N/A
050°	TDZE	N/A
	Apt Elev	7411

# RNAV (GPS)-B

MC ELROY AIRFIELD (20V)

RNP APCH.

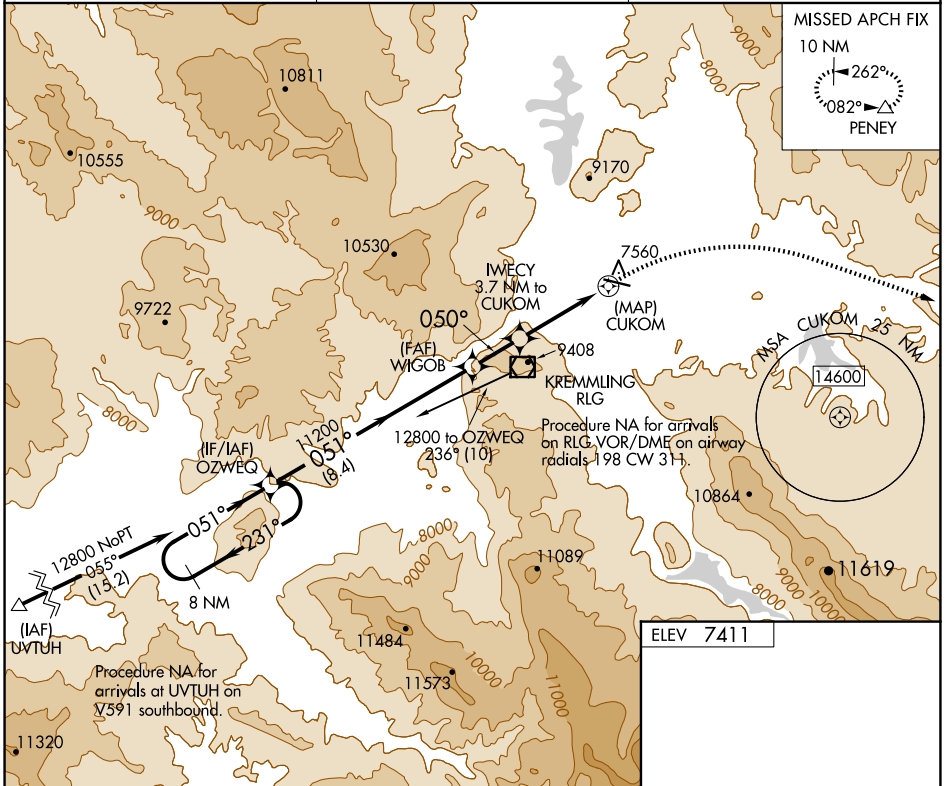
When local altimeter setting not received, procedure NA.  
 Night Landing Rwy 9 NA. Circling NA south of Rwy 9-27.  
 -19°C

MISSED APPROACH: Climbing right turn to 15600 direct PENNY and hold, continue climb-in-hold to 15600.

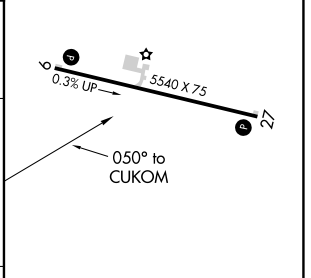
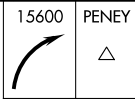
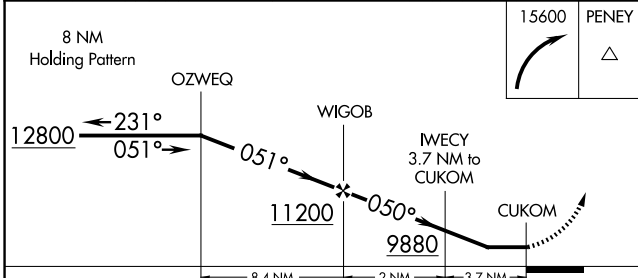
AWOS-3  
**118.425**

DENVER CENTER  
**128.65 282.2**

UNICOM  
**122.8 (CTAF) 0**



ELEV 7411



CATEGORY	A	B	C	D
CIRCLING	9440-1¼ 2029 (2100-1¼)	9440-1½ 2029 (2100-1½)	9440-3 2029 (2100-3)	NA

REIL Rwys 9 and 27 0  
MIRL Rwy 9-27 0

SW-1, 20 FEB 2025 to 20 MAR 2025

SW-1, 20 FEB 2025 to 20 MAR 2025