

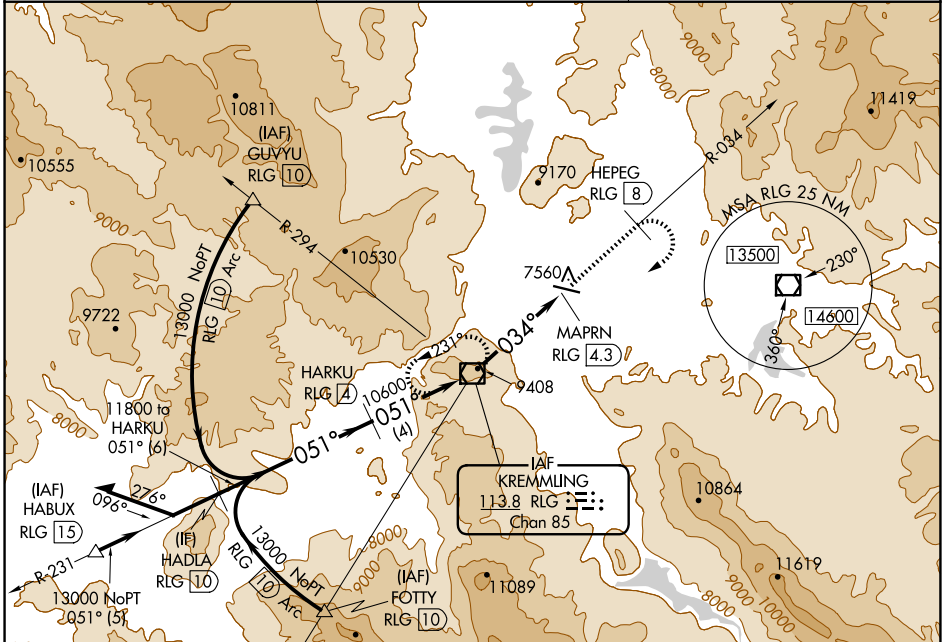
VOR/DME RLG 113.8 Chan 85	APP CRS 034°	Rwy Idg TDZE Apt Elev N/A N/A 7411
---	------------------------	--

VOR/DME-A
MC ELROY AIRFIELD (20V)

V When local altimeter setting not received, procedure NA. Night Landing Rwy 9 NA. Circling NA south of Rwy 9-27.
A
38 -19°C

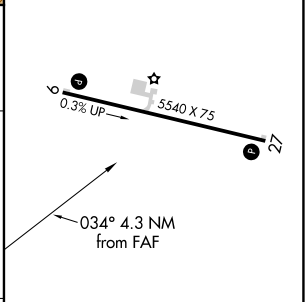
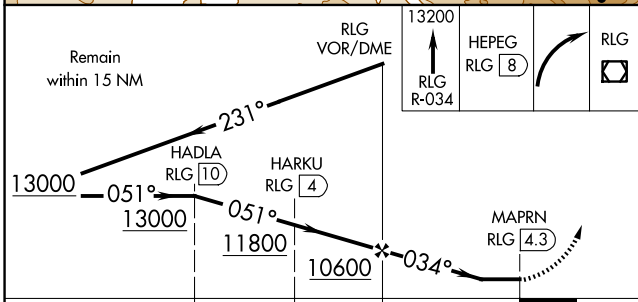
MISSED APPROACH: Climb to 13200 on RLG VOR/DME R-034 to HEPEG/RLG VOR/DME 8 DME then climbing right turn direct RLG VOR/DME and hold, continue climb-in-hold to 13200.

AWOS-3 118.425	DENVER CENTER 128.65 282.2	UNICOM 122.8 (CTAF)
--------------------------	--------------------------------------	-------------------------------



SW-1, 20 FEB 2025 to 20 MAR 2025

SW-1, 20 FEB 2025 to 20 MAR 2025



CATEGORY	A	B	C	D
C CIRCLING	9120-1¼ 1709 (1800-1¼)	9120-1½ 1709 (1800-1½)	9260-3 1849 (1900-3)	NA

REIL Rwy 9 and 27
MIRL Rwy 9-27