

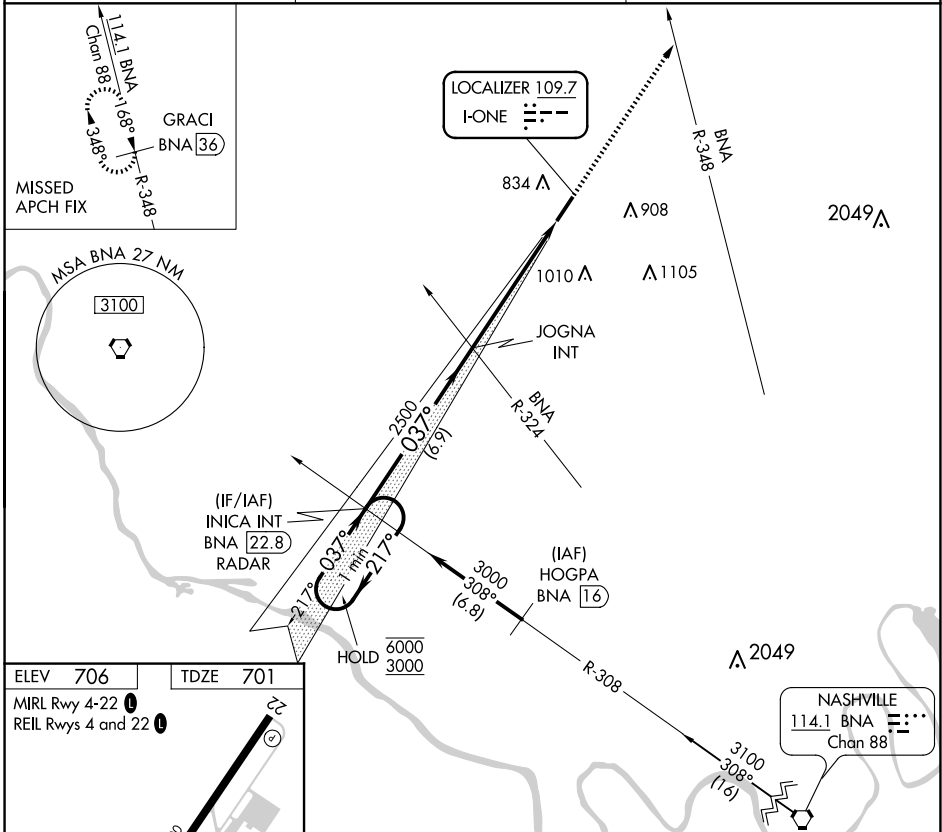
LOC I-ONE 109.7	APP CRS 037°	Rwy Idg 5505 TDZE 701 Apt Elev 706
---------------------------	------------------------	---

LOC RWY 4

SPRINGFIELD ROBERTSON COUNTY (M91)

NA Rwy 4 helicopter visibility reduction below 3/4 SM NA. MISSED APPROACH: Climb to 3100 on heading 037° and BNA VORTAC R-348, to GRACI/BNA 36 DME and hold.

AWOS-3 120.675	NASHVILLE APP CON 119.35 372.0	UNICOM 123.0 (CTAF) 0
--------------------------	--	---------------------------------



ELEV 706	TDZE 701
MIRL Rwy 4-22 0	REIL Rws 4 and 22 0

5585 x 100

FAF to MAP 5.5 NM

Knots	60	90	120	150	180
Min:Sec	5:30	3:40	2:45	2:12	1:50

INICA INT BNA 22.8 RADAR 6000 ← 217° 3000 ← 037° → 037°	3100	hdg 037°	BNA R-348	GRACI BNA 36
	JOGNA INT	2500	3.00° TCH 40	
	6.9 NM		5.5 NM	
CATEGORY	A	B	C	D
S-4	1180-1 479 (500-1)		1180-1 3/8 479 (500-1 3/8)	
<input checked="" type="checkbox"/> CIRCLING	1180-1 474 (500-1)		1360-1 3/4 479 (500-1 3/4) 1540-2 3/4 834 (900-2 3/4)	

SE-1, 20 FEB 2025 to 20 MAR 2025

SE-1, 20 FEB 2025 to 20 MAR 2025