

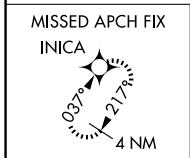
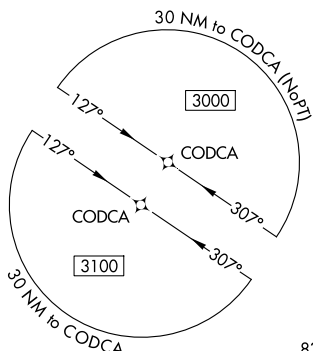
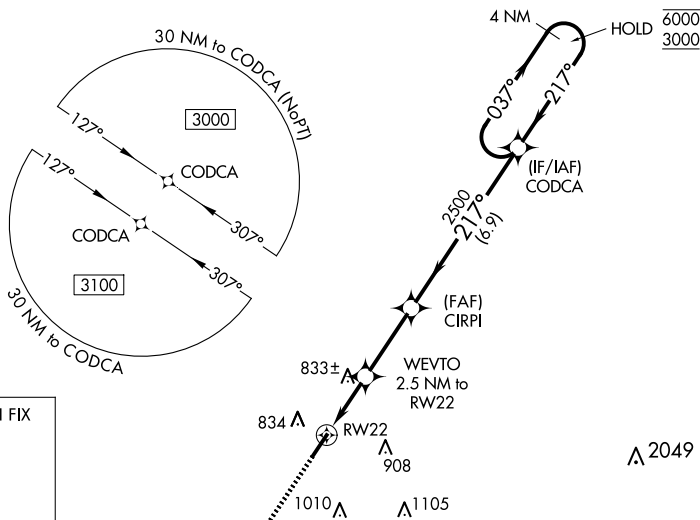
WAAS CH <b>42926</b> <b>W22A</b>	APP CRS <b>217°</b>	Rwy ldg TDZE Apt Elev	<b>5505</b> <b>706</b> <b>706</b>
--	------------------------	-----------------------------	---

# RNAV (GPS) RWY 22

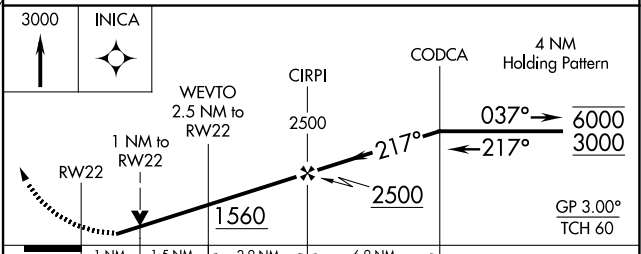
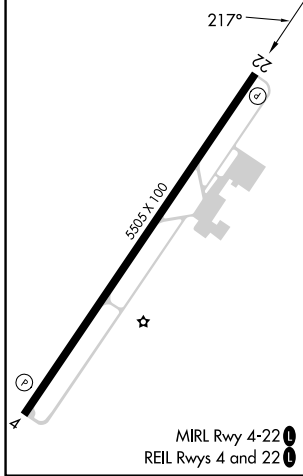
SPRINGFIELD ROBERTSON COUNTY (M91)

RNP APCH - GPS.		MISSED APPROACH: Climb to 3000 direct INICA and hold.
<p><b>▽</b> Rwy 22 helicopter visibility reduction below ¾ SM NA. For uncompensated Baro-VNAV systems,  <b>▲</b> NA LNAV/VNAV NA below -16°C or above 39°C.</p>		

AWOS-3 <b>120.675</b>	NASHVILLE APP CON <b>119.35 372.0</b>	UNICOM <b>123.0 (CTAF) 0</b>
--------------------------	--	---------------------------------



ELEV <b>706</b>	TDZE <b>706</b>
-----------------	-----------------



CATEGORY	A	B	C	D
LPV DA	975-7/8		269 (300-7/8)	
LNAV/VNAV DA	1010-7/8		304 (400-7/8)	
LNAV MDA	1100-1	394 (400-1)	1100-1 1/8	394 (400-1 1/8)
<b>C</b> CIRCLING	1140-1 434 (500-1)	1160-1 454 (500-1)	1360-1 3/4 654 (700-1 3/4)	1540-2 3/4 834 (900-2 3/4)

SE-1, 20 FEB 2025 to 20 MAR 2025

SE-1, 20 FEB 2025 to 20 MAR 2025