

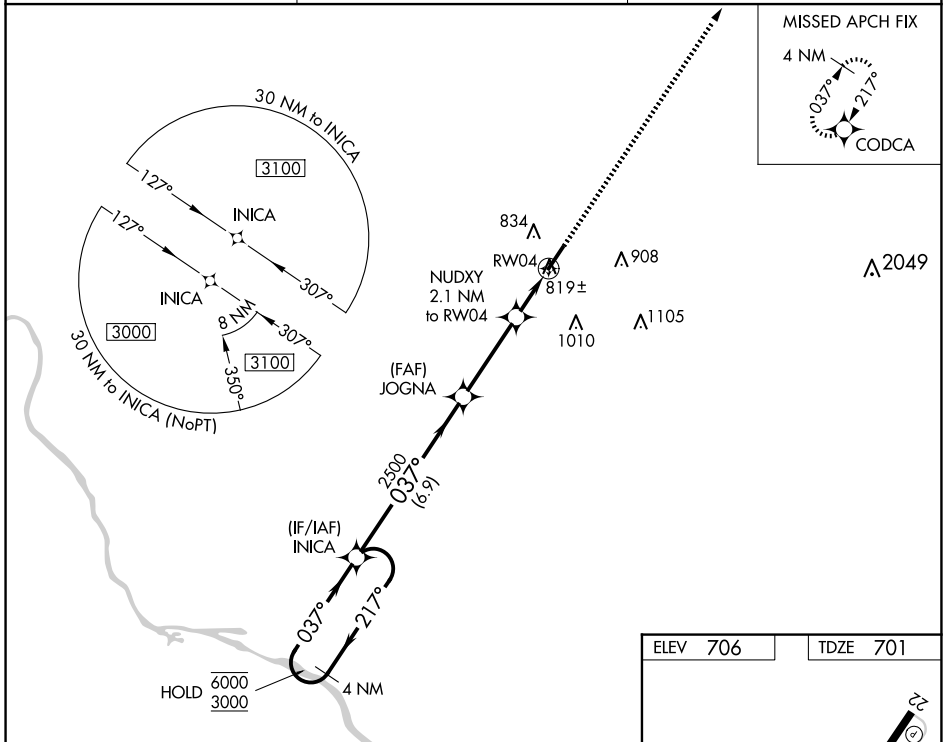
WAAS CH 86626 W04A	APP CRS 037°	Rwy Idg TDZE Apt Elev	5505 701 706
--	------------------------	-----------------------------	---

RNAV (GPS) RWY 4

SPRINGFIELD ROBERTSON COUNTY (M91)

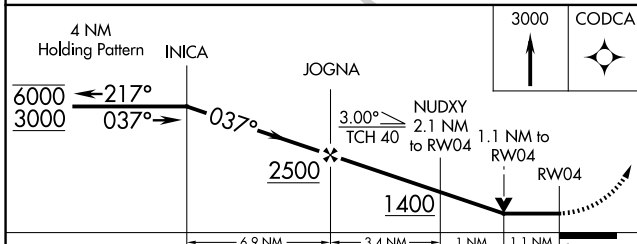
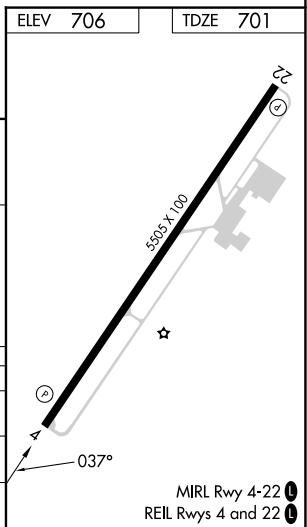
RNP APCH - GPS.		MISSED APPROACH: Climb to 3000 direct CODCA and hold.
▽ ▲ NA	Rwy 4 helicopter visibility reduction below 3/4 SM NA.	

AWOS-3 120.675	NASHVILLE APP CON 119.35 372.0	UNICOM 123.0 (CTAF) 0
--------------------------	--	---------------------------------



SE-1, 20 FEB 2025 to 20 MAR 2025

SE-1, 20 FEB 2025 to 20 MAR 2025



CATEGORY	A	B	C	D
LP MDA	1100-1	399 (400-1)	1100-1 1/8	399 (400-1 1/8)
LNVA MDA	1100-1	399 (400-1)	1100-1 1/8	399 (400-1 1/8)
C CIRCLING	1140-1 434 (500-1)	1160-1 454 (500-1)	1360-1 3/4 654 (700-1 3/4)	1540-2 3/4 834 (900-2 3/4)