

VORTAC CLL <b>113.3</b> Chan <b>80</b>	APP CRS <b>243°</b>	Rwy Idg TDZE Apt Elev <b>391</b>	N/A N/A <b>391</b>
--	------------------------	---	--------------------------

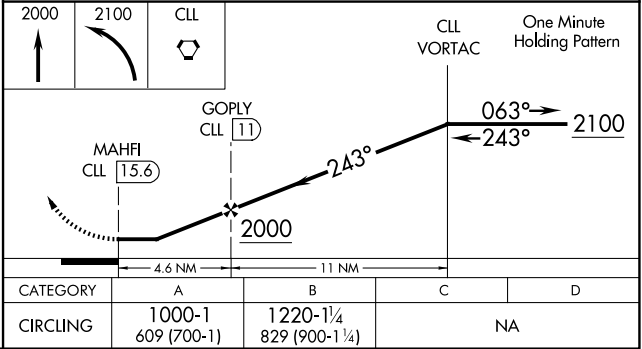
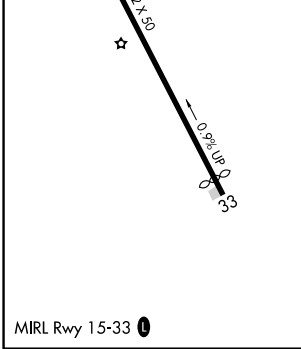
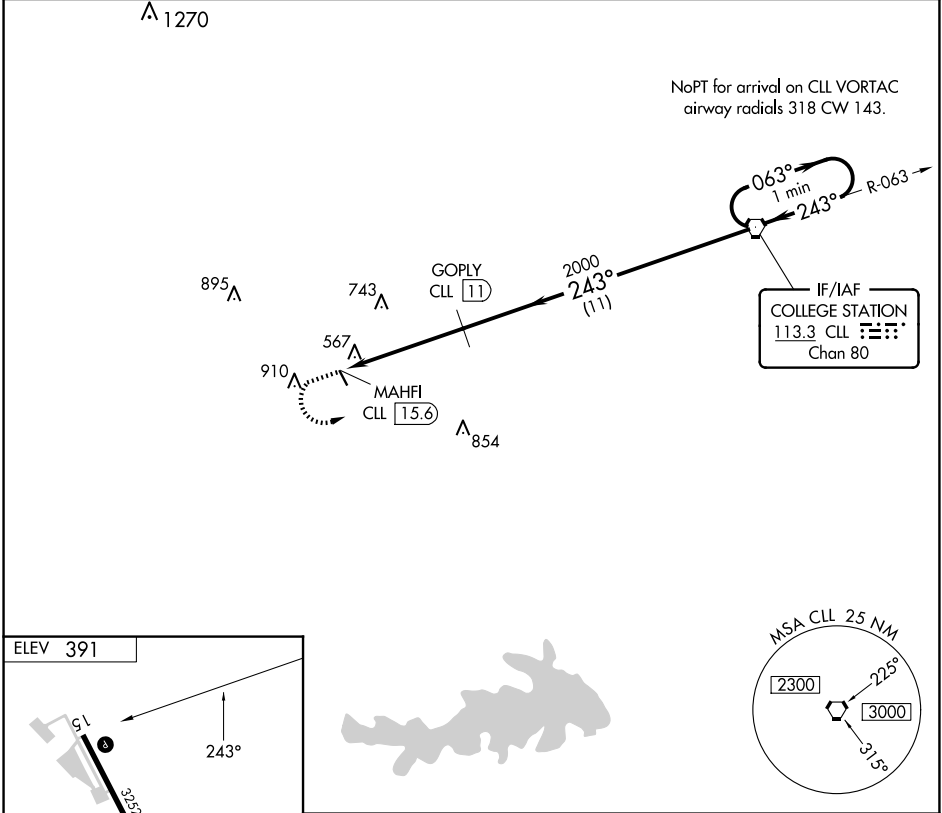
# VOR/DME-A

CALDWELL MUNI (R/WV)

**⚠** When local altimeter setting not received, use College Station altimeter setting and increase MDA 60 feet. Circling NA east of Rwy 15-33. Procedure NA at night.

MISSED APPROACH: Climb to 2000 then climbing left turn to 2100 direct CLL VORTAC and hold.

AWOS-3PT <b>118.35</b>	HOUSTON APP CON <b>134.3 360.85</b>	CTAF <b>122.9</b>
---------------------------	--	----------------------



SC-5, 20 FEB 2025 to 20 MAR 2025

SC-5, 20 FEB 2025 to 20 MAR 2025