

APP CRS	Rwy Idg	<b>3201</b>
<b>052°</b>	TDZE	<b>84</b>
	Apt Elev	<b>85</b>

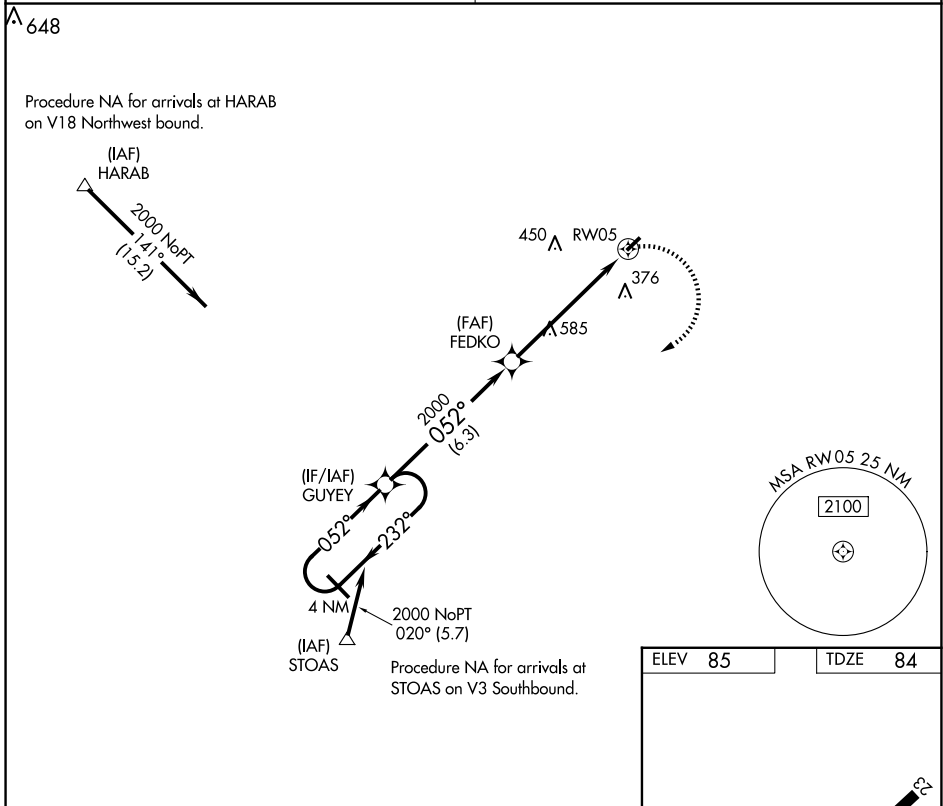
# RNAV (GPS) RWY 5

ST GEORGE (6J2)

**▼** DME/DME RNP-0.3 NA. Helicopter visibility reduction below 1 SM NA. Use Summerville altimeter setting; when not received, use Charleston altimeter setting and increase all MDAs 40 feet, increase LNAV and Circling Cat C visibility ¼ mile, increase LNAV and Circling Cat D visibility ½ mile. Procedure NA at night.

**▲** NA MISSED APPROACH: Climbing right turn to 2000 direct GUYEY and hold.

CHARLESTON APP CON <b>120.7 306.925</b>	UNICOM <b>122.8 (CTAF)</b>
--	-------------------------------



SE-2, 20 FEB 2025 to 20 MAR 2025

SE-2, 20 FEB 2025 to 20 MAR 2025

4 NM Holding Pattern	GUYEY		FEDKO		2000	GUYEY
	← 232°	→ 052°	← 052°	→ 052°	→ 3.05°	→ TCH 45
6.3 NM		5.8 NM		RWY 05		
CATEGORY	A	B	C	D	ILRL Rwy 5-23	
LNAV MDA	940-1¼	856 (900-1¼)	940-2½ 856 (900-2½)	940-2¾ 856 (900-2¾)		
CIRCLING	940-1¼	855 (900-1¼)	940-2½ 855 (900-2½)	940-2¾ 855 (900-2¾)		