

WAAS CH 78027 W30A	APP CRS 298°	Rwy Idg TDZE Apt Elev	4268 2613 2615
--	------------------------	-----------------------------	---

RNAV (GPS) RWY 30

ROY HURD MEML (E01)

⚠ DME/DME RNP-0.3 NA. VDP NA with Wink altimeter setting.
⚠ Obtain local altimeter setting on CTAF, when not received, use Wink altimeter setting. Night landing; Rwy 12 NA.
 Helicopter visibility reduction below $\frac{3}{4}$ SM NA.

MISSED APPROACH: Climb to 6000 direct WUVNI and on track 308 to INK VORTAC and hold.

AWOS-3PT
118.225

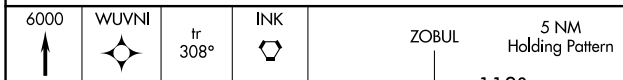
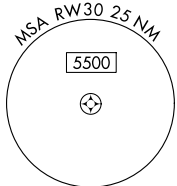
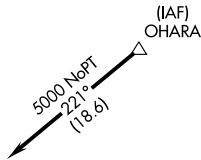
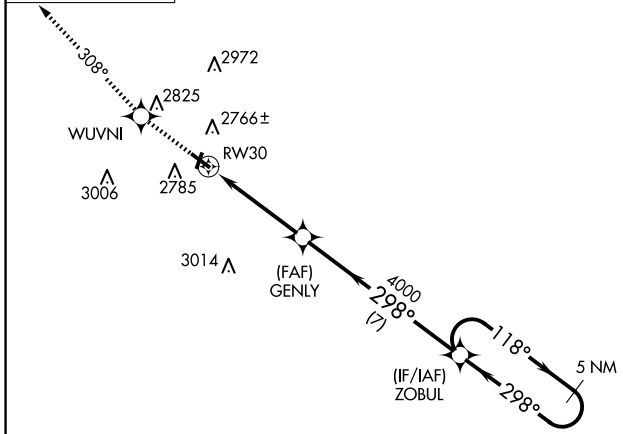
FORT WORTH CENTER
133.1 298.95

UNICOM
122.8 (CTAF)

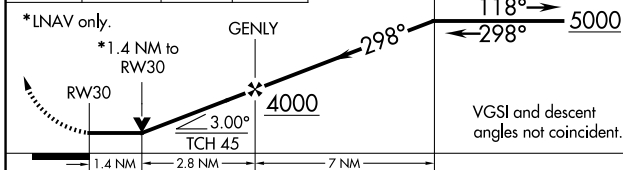


⚠ 3602

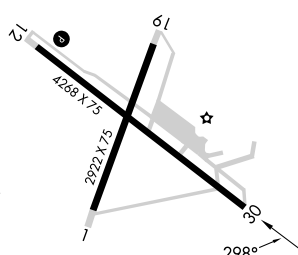
Procedure NA for arrivals at OHARA on V81 northeastbound.



ELEV 2615	TDZE 2613
-----------	-----------



CATEGORY	A	B	C	D
LP MDA	3080-1	467 (500-1)	3080-1 $\frac{1}{8}$ 467 (500-1 $\frac{3}{8}$)	NA
LNAV MDA	3100-1	487 (500-1)	3100-1 $\frac{3}{8}$ 487 (500-1 $\frac{3}{8}$)	NA
CIRCLING	3280-1	665 (700-1)	3280-1 $\frac{3}{4}$ 665 (700-1 $\frac{3}{4}$)	NA
WINK ALTIMETER SETTING MINIMUMS				
LP MDA	3160-1	547 (600-1)	3160-1 $\frac{1}{8}$ 547 (600-1 $\frac{1}{8}$)	NA
LNAV MDA	3180-1	567 (600-1)	3180-1 $\frac{1}{8}$ 567 (600-1 $\frac{1}{8}$)	NA
CIRCLING	3360-1	745 (800-1)	3360-2 $\frac{1}{4}$ 745 (800-2 $\frac{1}{4}$)	NA



MIRL Rwy 1-19 and 12-30

SC-3, 20 FEB 2025 to 20 MAR 2025

SC-3, 20 FEB 2025 to 20 MAR 2025