

LOC/DME I-RSW <b>111.5</b> Chan <b>52</b>	APP CRS <b>058°</b>	Rwy Idg <b>12000</b> TDZE <b>27</b> Apt Elev <b>30</b>
---	------------------------	--

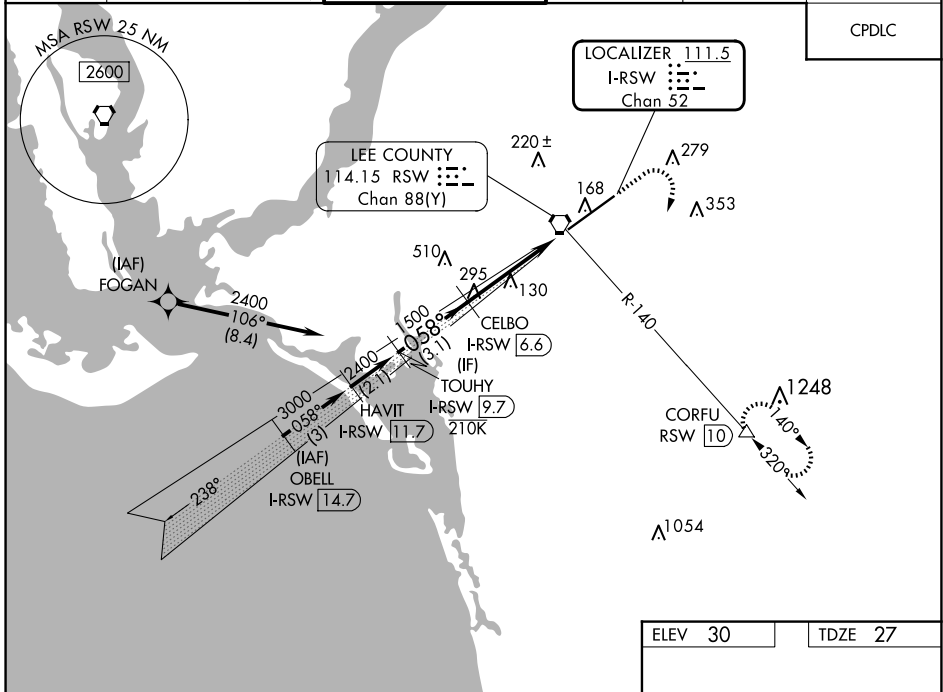
# ILS or LOC RWY 6

SOUTHWEST FLORIDA INTL (RSW)

RNP APCH - GPS from FOGAN. DME required.	MALSR 	MISSED APPROACH: Climb to 1000 then climbing right turn to 2300 on RSW VORTAC R-140 to CORFU/RSW 10 DME and hold.
⚠ For inop ALS, increase S-ILS 6 Cat E visibility to RVR 4000 and S-LOC 6 Cats C/D/E to RVR 5500.		

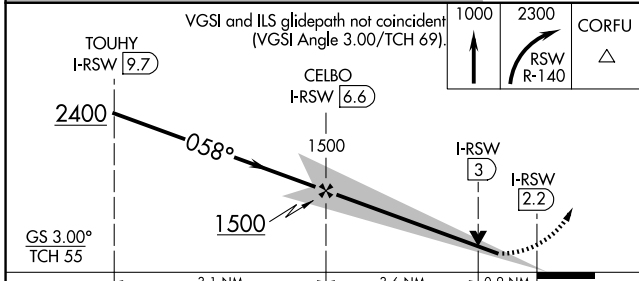
D-ATIS <b>124.65</b>	FORT MYERS APP CON ★ <b>125.15 306.2</b> (RWY 6) <b>126.8 306.2</b> (RWY 24)	FORT MYERS TOWER ★ <b>128.75</b> (CTAF) <b>0 257.8</b>	GND CON <b>121.9 257.8</b>	CLNC DEL <b>132.075</b>	UNICOM <b>122.95</b>
-------------------------	--	---	-------------------------------	----------------------------	-------------------------

CPDLC
-------

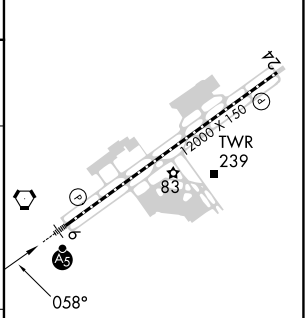


SE-3, 20 FEB 2025 to 20 MAR 2025

SE-3, 20 FEB 2025 to 20 MAR 2025



ELEV 30	TDZE 27
---------	---------



CATEGORY	A	B	C	D	E
S-ILS 6	227/18 200 (200-1/2)				
S-LOC 6	380/24	353 (400-1/2)	380/30	353 (400-5/8)	
CIRCLING	560-1	530 (600-1)	580-1 1/2 550 (600-1 1/2)	660-2 630 (700-2)	820-2 3/4 790 (800-2 3/4)

REIL Rwy 24  
TDZ/CL Rwy 6  
HIRL Rwy 6-24