

APP CRS <b>238°</b>	Rwy Idg <b>12000</b> TDZE <b>30</b> Apt Elev <b>30</b>
------------------------	--

# RNAV (RNP) Z RWY 24

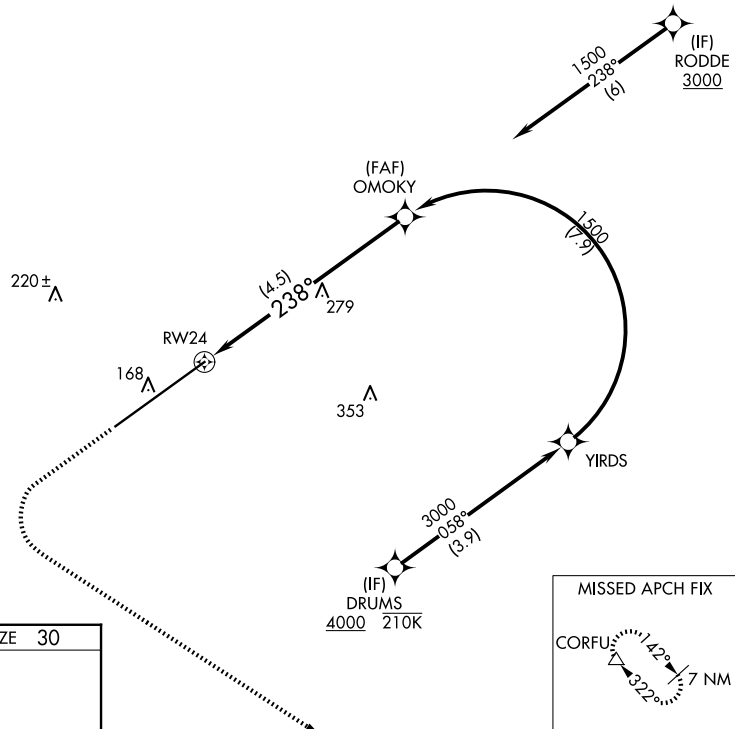
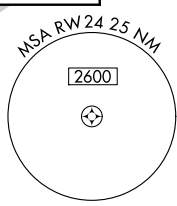
SOUTHWEST FLORIDA INTL (RSW)

RNP AR APCH - GPS.  
 For uncompensated Baro-VNAV systems, procedure NA below 4°C or above 54°C.

MISSED APPROACH: Climb to 500 then climbing left turn to 2300 direct CORFU and hold, continue climb-in-hold to 2300.

D-ATIS <b>124.65</b>	FORT MYERS APP CON * <b>125.15 306.2</b> (RWY 6) <b>126.8 306.2</b> (RWY 24)	FORT MYERS TOWER * <b>128.75</b> (CTAF) <b>0 257.8</b>	GND CON <b>121.9 257.8</b>	CLNC DEL <b>132.075</b>	UNICOM <b>122.95</b>
-------------------------	--	---	-------------------------------	----------------------------	-------------------------

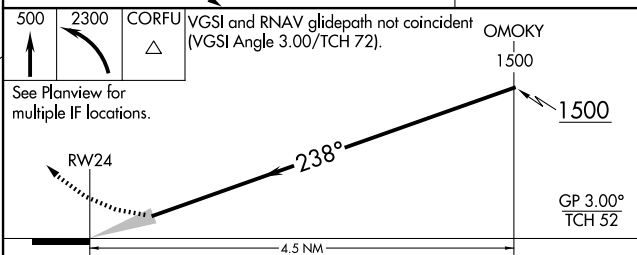
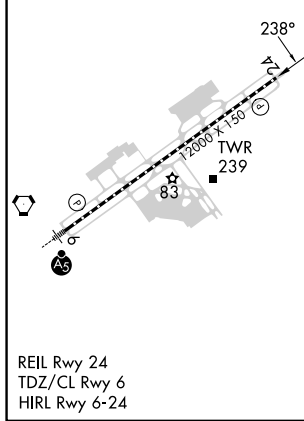
CPDLC



SE-3, 20 FEB 2025 to 20 MAR 2025

SE-3, 20 FEB 2025 to 20 MAR 2025

ELEV 30	TDZE 30
---------	---------



CATEGORY	A	B	C	D
RNP 0.11 DA		294-7/8	264 (300-7/8)	
RNP 0.30 DA		397-1	367 (400-1)	

**AUTHORIZATION REQUIRED**