

WAAS CH <b>65619</b> <b>W06A</b>	APP CRS <b>058°</b>	Rwy Idg <b>12000</b> TDZE <b>27</b> Apt Elev <b>30</b>
----------------------------------------	------------------------	--------------------------------------------------------------

# RNAV (GPS) Y RWY 6

SOUTHWEST FLORIDA INTL (RSW)

RNP APCH - GPS.

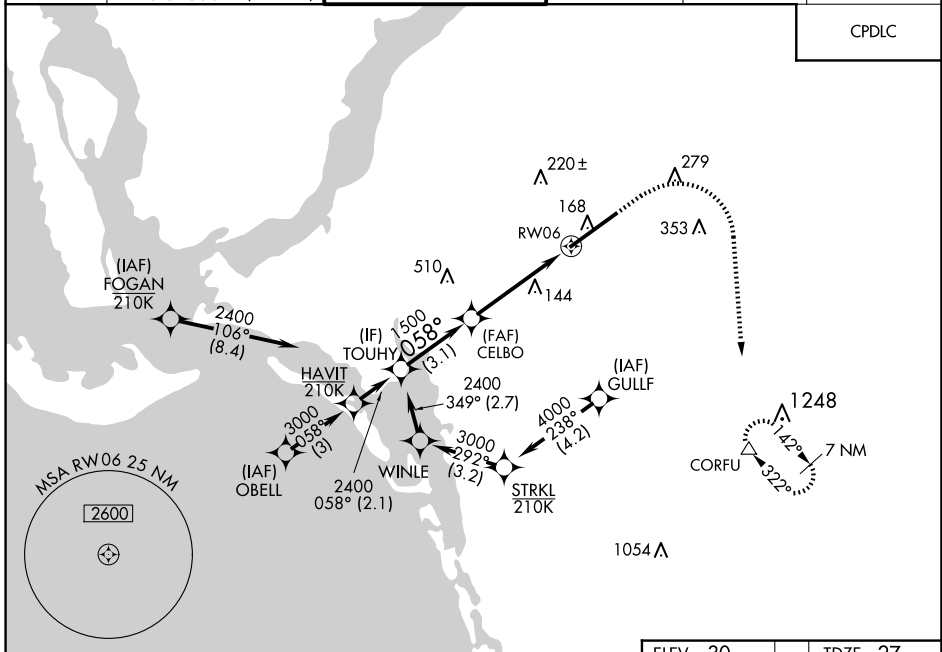
▼ For uncompensated Baro-VNAV systems, LNAV/VNAV NA below 4°C or above 54°C. For inop ALS, increase LNAV/VNAV all Cats visibility to RVR 5500, and LNAV Cats C and D visibility to RVR 5500.



MISSED APPROACH: Climb to 1000 then climbing right turn to 2300 direct CORFU and hold.

D-ATIS <b>124.65</b>	FORT MYERS APP CON ★ <b>125.15 306.2</b> (RWY 6) <b>126.8 306.2</b> (RWY 24)	FORT MYERS TOWER ★ <b>128.75</b> (CTAF) <b>0 257.8</b>	GND CON <b>121.9 257.8</b>	CLNC DEL <b>132.075</b>	UNICOM <b>122.95</b>
-------------------------	------------------------------------------------------------------------------------	-----------------------------------------------------------	-------------------------------	----------------------------	-------------------------

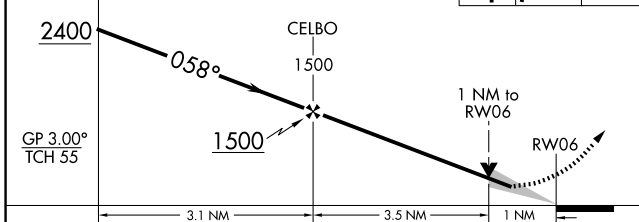
CPDLC



SE-3, 20 FEB 2025 to 20 MAR 2025

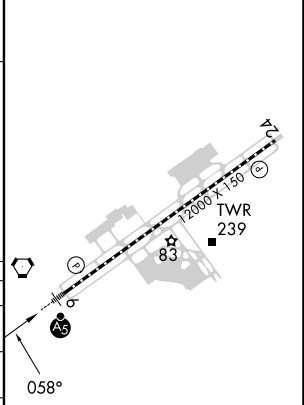
SE-3, 20 FEB 2025 to 20 MAR 2025

VGSI and RNAV glidepath not coincident (VGSI Angle 3.00/TCH 69).



ELEV 30	TDZE 27
---------	---------

CATEGORY	A	B	C	D
LPV DA		227/18	200 (200-½)	
LNAV/VNAV DA		392/35	365 (400-¾)	
LNAV MDA	400/24	373 (400-½)	400/35	373 (400-¾)
CIRCLING	560-1	530 (600-1)	580-1½ 550 (600-½)	660-2 630 (700-2)



REIL Rwy 24  
TDZ/CL Rwy 6  
HIRL Rwy 6-24