

# SCUBY EIGHT DEPARTURE

FORT MYERS, FLORIDA

**TOP ALTITUDE:  
3000**

RADAR required.

★ FORT MYERS DEP CON  
124.125 371.85  
MIAMI CENTER  
134.75 322.5  
D-ATIS  
124.65  
CLNC DEL  
132.075  
GND CON  
121.9 257.8  
★ FORT MYERS TOWER  
128.75 (CTAF) 257.8

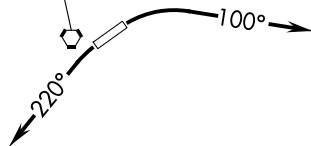
ORLANDO  
112.2 ORL :---  
Chan 59

ST. PETERSBURG  
116.4 PIE :---  
Chan 111

LAKELAND  
116.0 LAL :---  
Chan 107

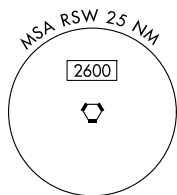
SARASOTA  
117.0 SRQ :---  
Chan 117

LEE COUNTY  
114.15 RSW :---  
Chan 88(Y)



TAKEOFF MINIMUMS  
Rwy 6, 24: Standard.

KEY WEST  
113.5 EYW :---  
Chan 82



NOTE: Chart not to scale.



## DEPARTURE ROUTE DESCRIPTION

TAKEOFF RUNWAY 6: Climbing right turn heading 100° or as assigned for vectors to join filed route, thence. . . .

TAKEOFF RUNWAY 24: Climbing left turn heading 220° or as assigned for vectors to join filed route, thence. . . .

. . . .all aircraft maintain 3000 or assigned altitude. Expect further clearance to filed altitude within 10 minutes after departure.

# SCUBY EIGHT DEPARTURE