

APP CRS	Rwy Idg	3060
013°	TDZE	1034
	Apt Elev	1042

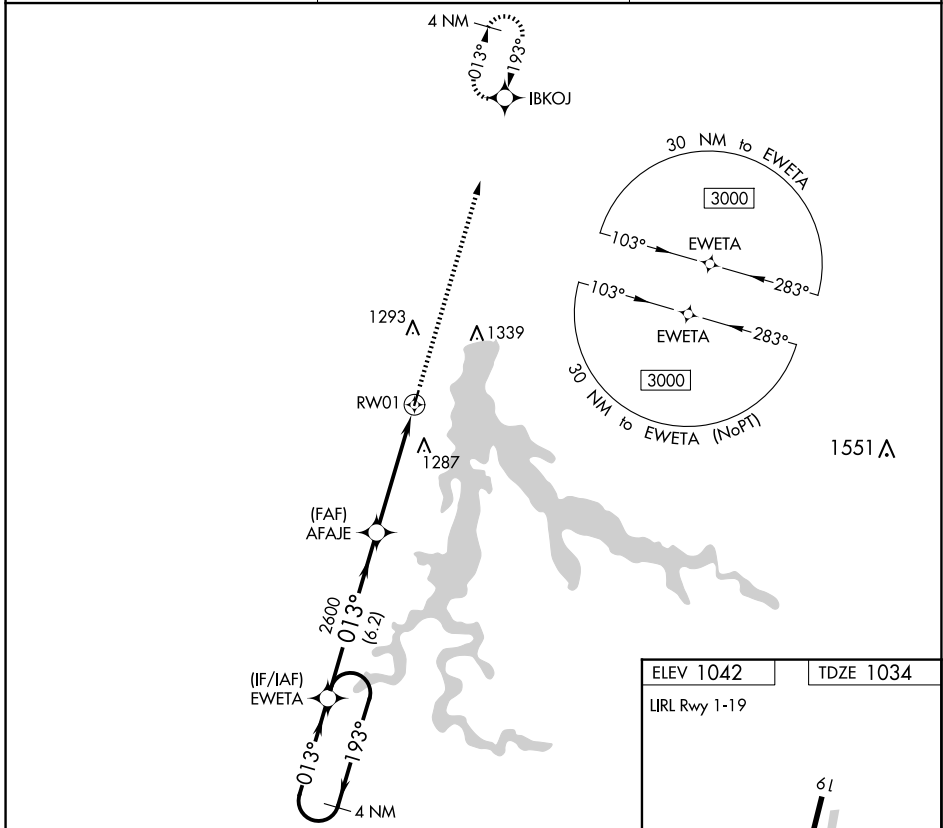
RNAV (GPS) RWY 1

STOCKTON LAKE (MO3)

▽ Use Nevada altimeter setting; when not received, use Springfield altimeter setting and increase all MDA 40 feet. DME/DME RNP-0.3 NA. Helicopter visibility reduction below 1 SM NA. Procedure NA at night.

MISSED APPROACH: Climb to 3000 direct IBKOJ and hold.

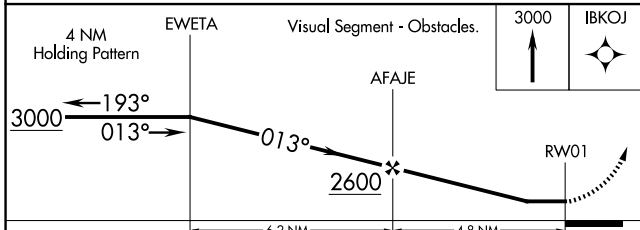
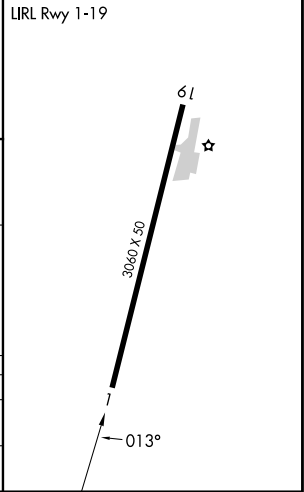
NVD AWOS-3PT 119.175	SPRINGFIELD APP CON 124.95	CTAF 122.9
--------------------------------	--------------------------------------	----------------------



NC-3, 20 FEB 2025 to 20 MAR 2025

NC-3, 20 FEB 2025 to 20 MAR 2025

ELEV 1042	TDZE 1034
-----------	-----------



CATEGORY	A	B	C	D
LNVA MDA	1600-1	566 (600-1)	NA	
CIRCLING	1600-1 558 (600-1)	1700-1 658 (700-1)	NA	