

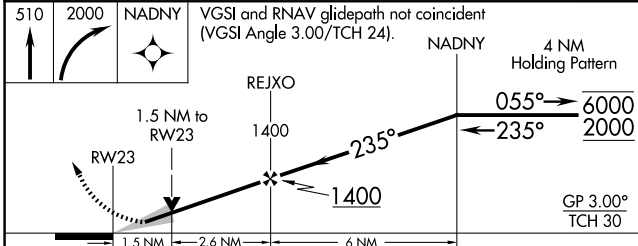
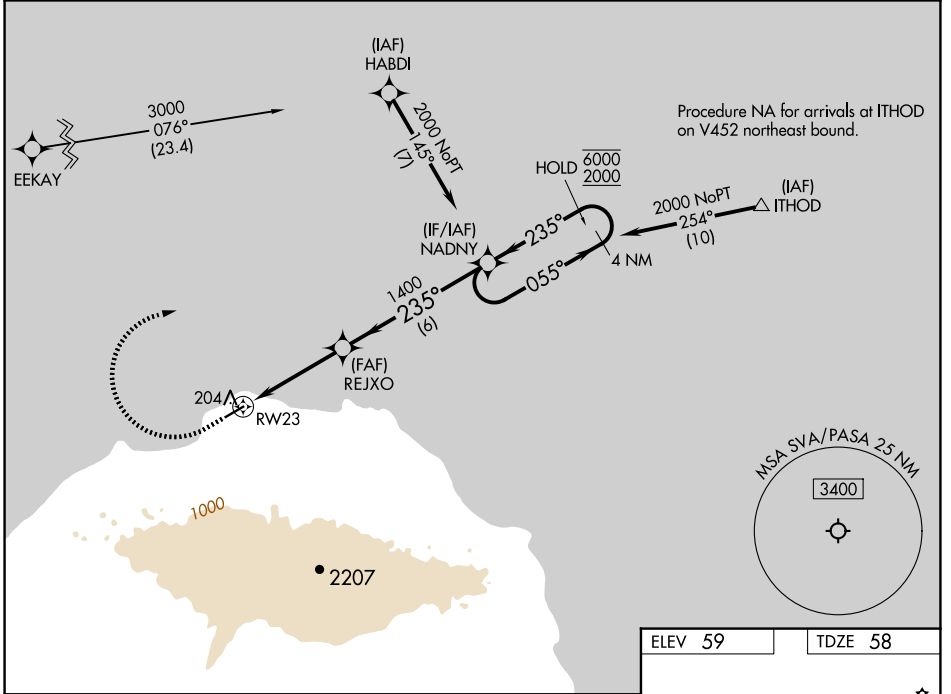
WAAS CH <b>58245</b> <b>W23A</b>	APP CRS <b>235°</b>	Rwy Idg TDZE Apt Elev	<b>4400</b> <b>58</b> <b>59</b>
--	------------------------	-----------------------------	---------------------------------------

# RNAV (GPS) RWY 23

SAVOONGA (SVA) (PASA)

RNP APCH - GPS.	MISSED APPROACH: Climb to 510 then climbing right turn to 2000 direct NADNY and hold.
<p>⚠ For uncompensated Baro-VNAV systems, LNAV/VNAV NA below -22°C or above 54°C. Circling NA southeast of Rwy 5-23.</p>	

AWOS-3P <b>121.3</b>	ANCHORAGE CENTER <b>132.2 281.4</b>	NOME RADIO <b>122.3</b>	CTAF <b>122.7</b>
-------------------------	--	----------------------------	----------------------



CATEGORY	A	B	C	D
LPV DA	308-1 250 (300-1)			
LNAV/VNAV DA	408-1 350 (400-1)			
LNAV MDA	460-1 402 (500-1)	460-1½ 402 (500-1½)		
CIRCLING	520-1 461 (500-1)	780-2 721 (800-2)	1100-3 1041 (1100-3)	

ELEV 59	TDZE 58
---------	---------

MIRL Rwy 5-23

AK, 20 FEB 2025 to 17 APR 2025

AK, 20 FEB 2025 to 17 APR 2025