

APP CRS <b>177°</b>	Rwy Idg <b>5001</b>
TDZE <b>874</b>	
Apt Elev <b>874</b>	

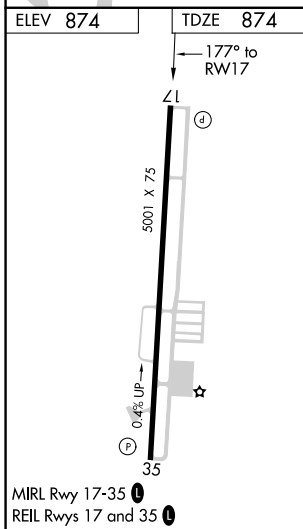
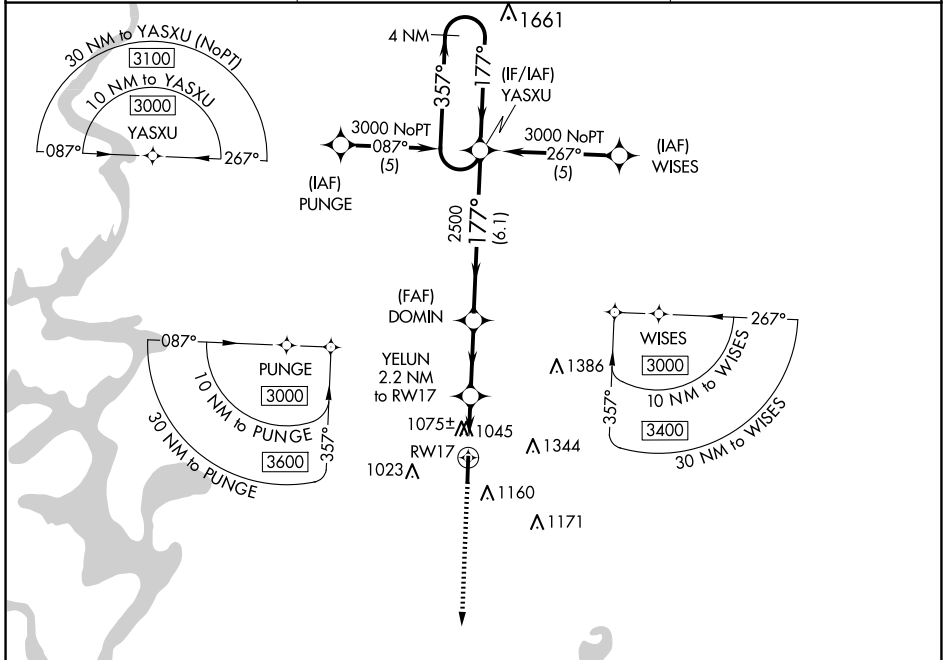
# RNAV (GPS) RWY 17

TAHLEQUAH MUNI (TQH)

**⚠** DME/DME RNP-0.3 NA. Visibility reduction by helicopters NA. When local altimeter setting not received, use Muskogee altimeter setting and increase all MDAs 100 feet and increase LNAV Cat C visibility and Circling Cat C visibility 1/4 SM.

**⚠** MISSED APPROACH: Climb to 3100 direct SUBME and hold.

AWOS-3P <b>118.425</b>	MEMPHIS CENTER <b>126.1 269.0</b>	UNICOM <b>122.8 (CTAF)</b> <b>①</b>
---------------------------	--------------------------------------	--



ELEV 874	TDZE 874
3100 SUBME	VGSI and descent angles not coincident (VGSI Angle 3.50/TCH 39).
DOMIN	YAS XU 4 NM Holding Pattern
YELUN 2.2 NM to RW17	3.04° TCH 40
RW17	2500
1600	357° → 3000
2.2 NM	2.7 NM
6.1 NM	177° ← 3000
CATEGORY	A B C D
LNAV MDA	1380-1 506 (600-1) 1380-1½ 506 (600-1½) NA
CIRCLING	1520-1 646 (700-1) 1780-2¾ 906 (1000-2¾) NA

SC-1, 20 FEB 2025 to 20 MAR 2025

SC-1, 20 FEB 2025 to 20 MAR 2025