

WAAS CH 86822 W22A	APP CRS 216°	Rwy Idg TDZE Apt Elev	5199 3472 3543
--	------------------------	-----------------------------	---

RNAV (GPS) RWY 22

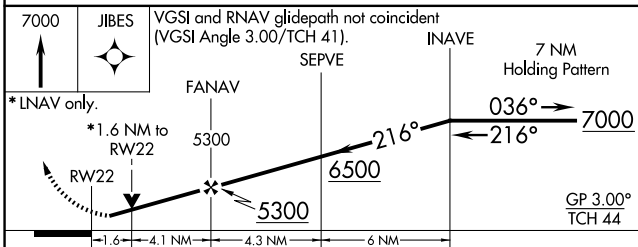
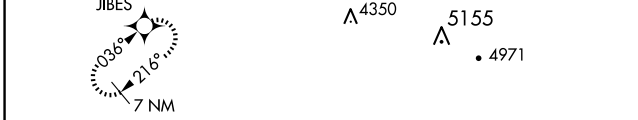
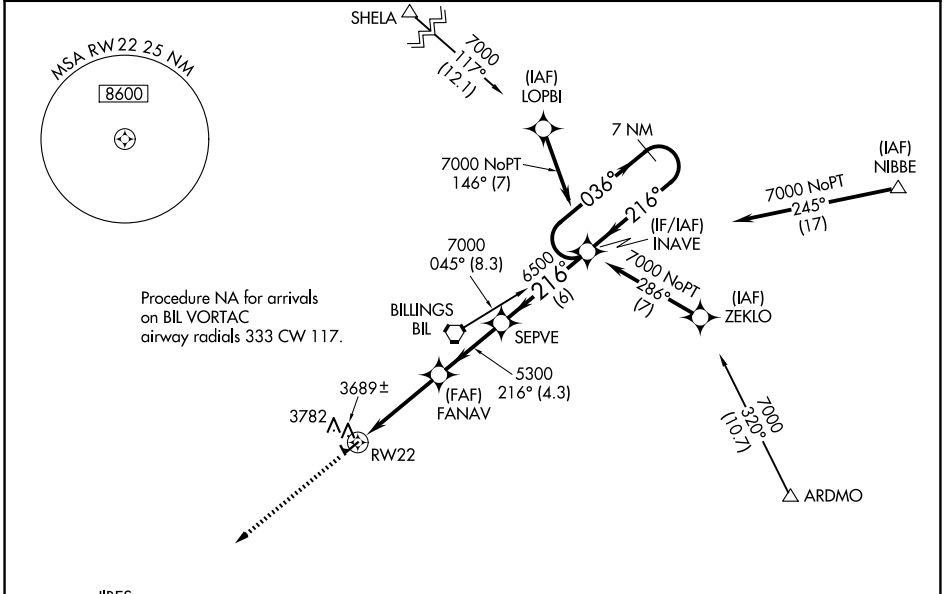
LAUREL MUNI (6S8)

RNP APCH.

⚠ For uncompensated Baro-VNAV systems, LNAV/VNAV NA below -21°C or above 53°C. When local altimeter setting not received, use Billings altimeter setting. Baro-VNAV and VDP NA when using Billings altimeter setting. Rwy 22 helicopter visibility reduction below 3/4 SM NA.

MISSED APPROACH: Climb to 7000 direct JIBES and hold, continue climb-in-hold to 7000.

AWOS-2 135.05	BILLINGS APP CON 119.2 120.5 284.6	AUNICOM 123.05 (CTAF)
-------------------------	--	---------------------------------



CATEGORY	A	B	C	D
LPV DA	3767-1		295 (300-1)	
LNAV/VNAV DA	3965-1 5/8		493 (500-1 5/8)	
LNAV MDA	4000-1	528 (500-1)	4000-1 5/8	528 (500-1 5/8)

ELEV 3543	TDZE 3472
-----------	-----------

MIRL Rwy 4-22 and 14-32

NW-1, 20 FEB 2025 to 20 MAR 2025

NW-1, 20 FEB 2025 to 20 MAR 2025