

WAAS CH 70746 W 13A	APP CRS 127°	Rwy Idg TDZE Apt Elev	6350 215 231
---	------------------------	-----------------------------	---

RNAV (GPS) RWY 13

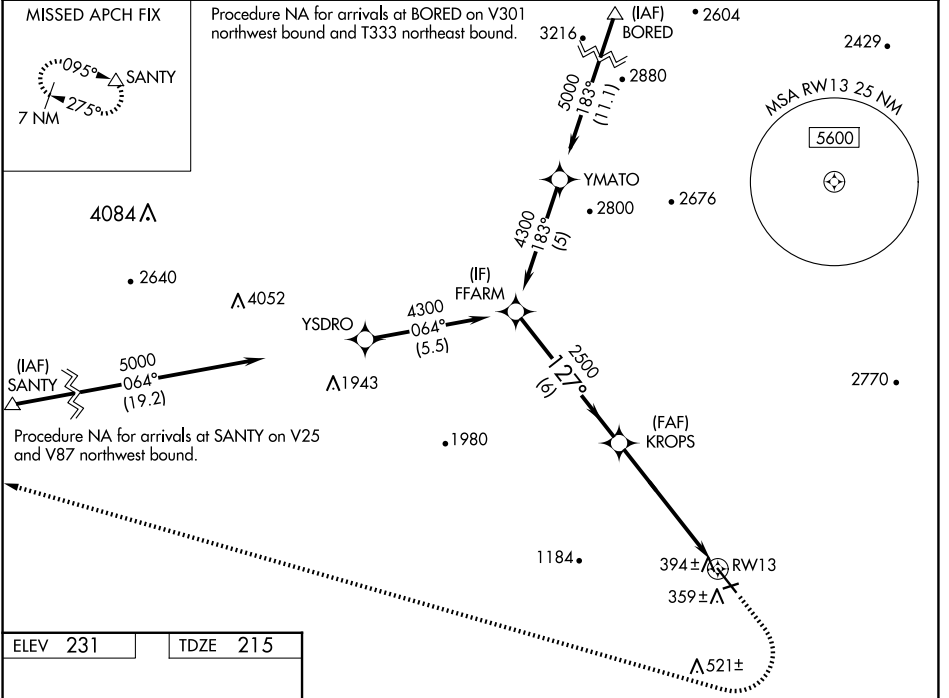
HOLLISTER MUNI (CVH)

RNP APCH - GPS.

▼ For uncompensated Baro-VNAV systems,
▲ LNAV/VNAV NA below -15°C or above 54°C.

MISSED APPROACH: (Do not exceed 200 KIAS until SANYT)
Climb to 1100 then climbing right turn to 7000 direct SANYT and hold.
*Missed approach requires minimum climb of 245 feet per NM to 1900.

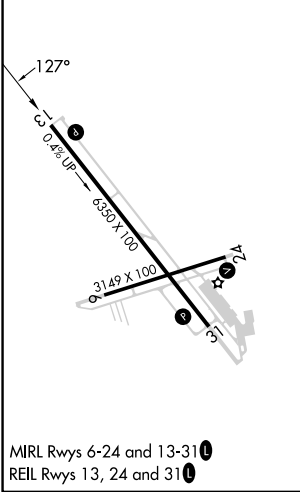
AWOS-3 120.425	NORCAL APP CON 124.525 348.675	UNICOM 123.0 (CTAF) 0
--------------------------	--	---------------------------------



SW-2, 20 FEB 2025 to 20 MAR 2025

SW-2, 20 FEB 2025 to 20 MAR 2025

ELEV 231	TDZE 215
----------	----------



VGSI and RNAV glidepath not coincident (VGSI Angle 3.00/TCH 44).

4300	2500	1100	7000	SANYT
FFARM	KROPS			Δ
6 NM	3.9 NM	1.9 NM	1.9 NM	
GP 3.70°	TCH 44			
1.9 NM to RW13	RW13			

CATEGORY	A	B	C	D
LPV DA	535-7/8	320 (400-7/8)		NA
LNAV/VNAV DA	1055-2 1/2	840 (900-2 1/2)		NA
LNAV/VNAV DA*	564-1	349 (400-1)		NA
LNAV MDA	840-1	625 (700-1)	840-1 3/4 625 (700-1 3/4)	NA