

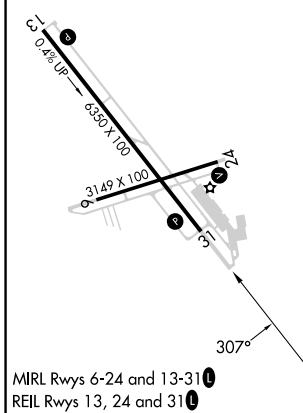
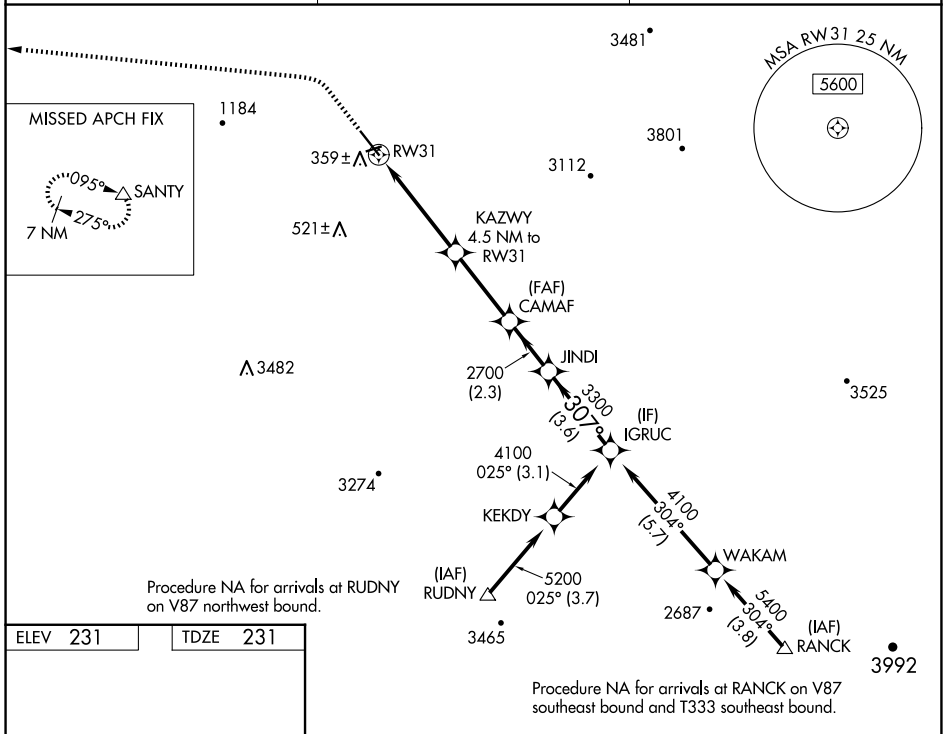
WAAS CH 93806 W31A	APP CRS 307°	Rwy Idg TDZE Apt Elev	6350 231 231
--	------------------------	-----------------------------	---

RNAV (GPS) RWY 31

HOLLISTER MUNI (CVH)

RNP APCH - GPS.	MISSED APPROACH: Climb to 1200, then climbing left turn to 7000 direct SANTY and hold, continue climb-in-hold to 7000.
<p>▼ Rwy 31 helicopter visibility reduction below ¼ SM NA.</p> <p>▲ For uncompensated Baro-VNAV systems, LNAV/VNAV NA below -15°C or above 54°C.</p>	

AWOS-3 120.425	NORCAL APP CON 124.525 348.675	UNICOM 123.0 (CTAF) 0
--------------------------	--	---------------------------------



1200	7000	SANTY		
		KAZWY 4.5 NM to RWY 31	CAMAF 2700	JINDI 3300
		2.3 NM	2.2 NM	3.1 NM
		1700	2700	4100
		2.3 NM	2.3 NM	3.6 NM
		IGRUC		4100
				GP 3.00° TCH 44
CATEGORY	A	B	C	D
LPV DA	657-1¼ 426 (500-1¼)			NA
LNAV/VNAV DA	750-1⅜ 519 (600-1⅜)			NA
LNAV MDA	1000-1 769 (800-1)	1000-1¼ 769 (800-1¼)	1000-2½ 769 (800-2½)	NA

SW-2, 20 FEB 2025 to 20 MAR 2025

SW-2, 20 FEB 2025 to 20 MAR 2025