

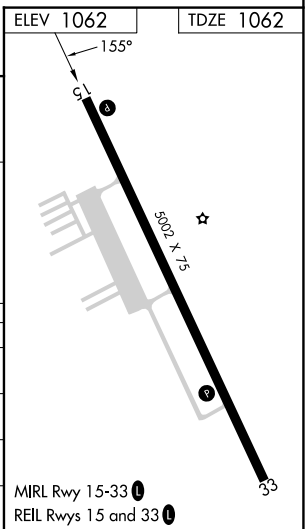
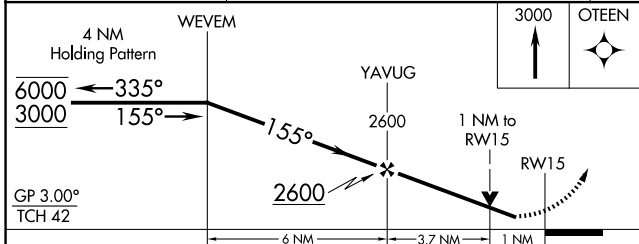
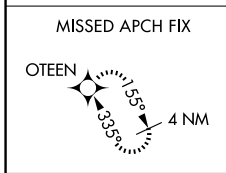
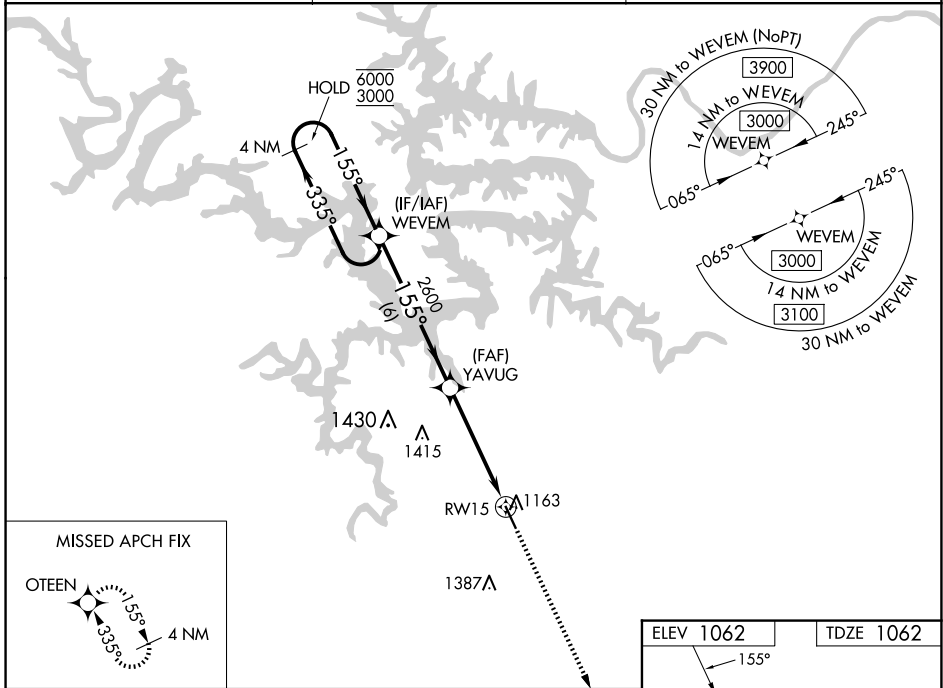
WAAS CH <b>50219</b> <b>W15A</b>	APP CRS <b>155°</b>	Rwy Idg TDZE Apt Elev	<b>5002</b> <b>1062</b> <b>1062</b>
--	------------------------	-----------------------------	---

# RNAV (GPS) RWY 15

CAMDENTON MEML-LAKE RGNL (OZS)

RNP APCH - GPS.	MISSED APPROACH: Climb to 3000 direct OTEEN and hold.
<p><b>▼</b> Rwy 15 helicopter visibility reduction below 3/4 SM NA.</p> <p><b>▲</b> For uncompensated Baro-VNAV systems, LNAV/VNAV NA below -17°C or above 54°C.</p>	

AWOS-3PT <b>120.225</b>	MIZZU APP CON <b>124.1 353.925</b>	UNICOM <b>122.8 (CTAF) 0</b>
----------------------------	---------------------------------------	---------------------------------



CATEGORY	A	B	C	D
LPV DA		1312-1 250 (300-1)		NA
LNAV/VNAV DA		1313-1 251 (300-1)		NA
LNAV MDA		1420-1 358 (400-1)		NA
<b>C</b> CIRCLING	1520-1 458 (500-1)		1700-1 3/4 638 (700-1 3/4)	NA

NC-3, 20 FEB 2025 to 20 MAR 2025

NC-3, 20 FEB 2025 to 20 MAR 2025