

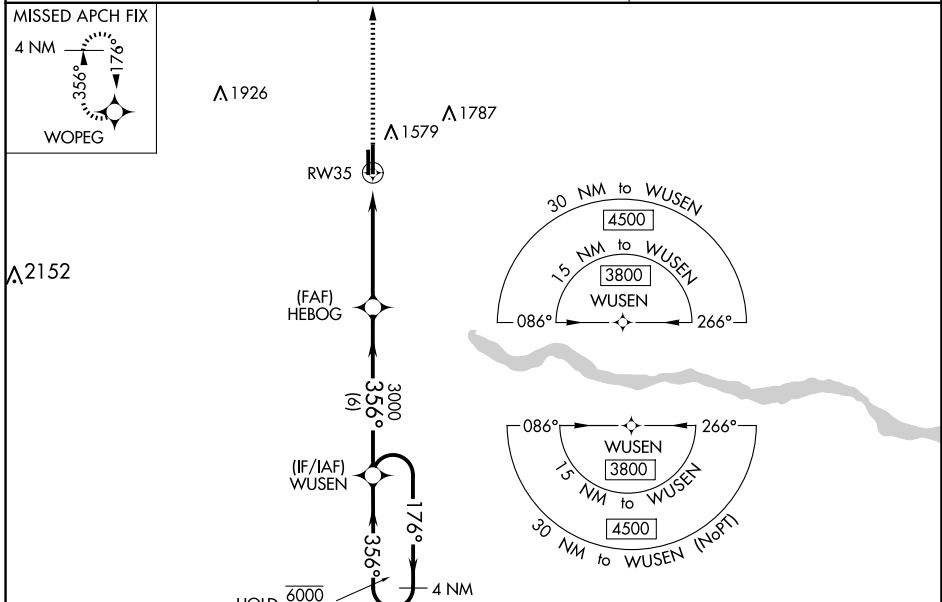
WAAS CH <b>97443</b> <b>W35A</b>	APP CRS <b>356°</b>	Rwy Idg TDZE <b>1417</b> Apt Elev <b>1420</b>
--	------------------------	---

# RNAV (GPS) RWY 35

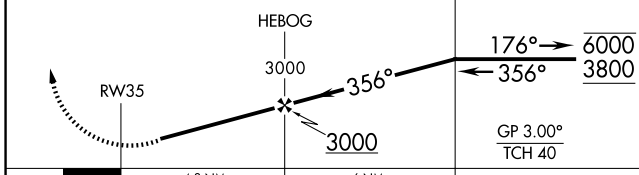
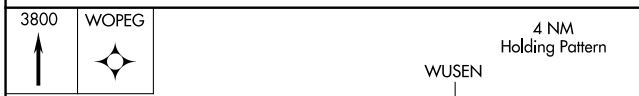
EL RENO RGNL (RQO)

RNP APCH-GPS.	MISSED APPROACH: Climb to 3800 direct WOPEG and hold.
<p>▼ Rwy 35 helicopter visibility reduction below 1 SM NA. Straight-in Rwy 35 NA at night, Circling Rwy 35 NA at night. For uncompensated Baro-VNAV systems, LNAV/VNAV NA below -17°C or above 54°C. Circling NA to Rwy 18 and 36.</p>	

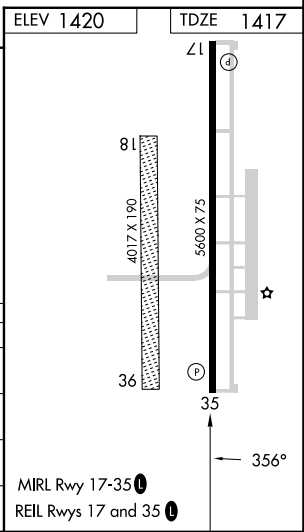
AWOS-3 <b>118.475</b>	OKE CITY APP CON <b>124.6 266.8</b>	UNICOM <b>122.8 (CTAF) 0</b>
--------------------------	--	---------------------------------



ELEV <b>1420</b>	TDZE <b>1417</b>
------------------	------------------



CATEGORY	A	B	C	D
LPV DA		1667-1	250 (300-1)	
LNAV/VNAV DA		1667-1	250 (300-1)	
LNAV MDA	1800-1	383 (400-1)	1800-1 $\frac{1}{8}$	383 (400-1 $\frac{1}{8}$ )
<b>C</b> CIRCLING	1900-1	480 (500-1)	2140-2 720 (800-2)	2140-2 $\frac{1}{4}$ 720 (800-2 $\frac{1}{4}$ )



SC-1, 20 FEB 2025 to 20 MAR 2025

SC-1, 20 FEB 2025 to 20 MAR 2025