

LOC/DME I-JFX 108.9 Chan 26	APP CRS 273°	Rwy Idg TDZE Apt Elev	4800 481 483
--	------------------------	-----------------------------	---

ILS or LOC RWY 27

WALKER COUNTY/BEVILL FLD (JFX)

DME required.

NA Rwy 27 helicopter visibility reduction below $\frac{3}{4}$ SM NA. VDP NA when using Birmingham altimeter setting. When local altimeter setting not received, use Birmingham altimeter setting; increase DA to 892 feet and S-ILS all Cats visibilities $\frac{1}{4}$ SM; increase all MDAs 120 feet and S-LOC Cats C and D and Circling Cats C and D visibility $\frac{1}{4}$ SM.

MISSED APPROACH: Climb to 1500 then climbing left turn to 3000 on VUZ VORTAC R-298 to NEGEE/16 DME and hold.

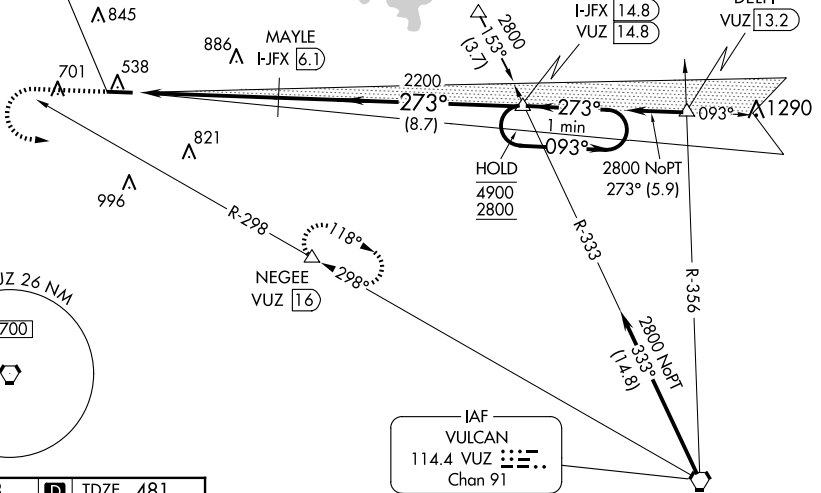
AWOS-3PT
119.225

BIRMINGHAM APP CON
127.675 338.2

GCO
121.725

UNICOM
123.075 (CTAF) 0

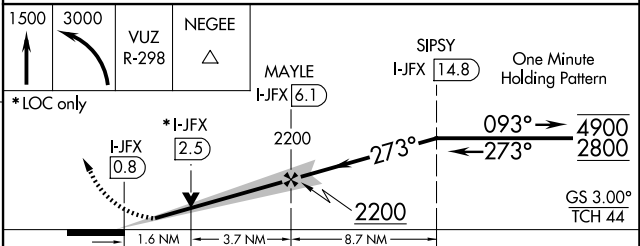
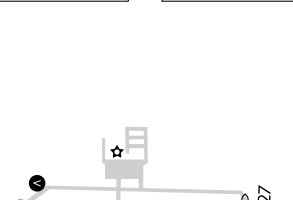
LOCALIZER 108.9
I-JFX
Chan 26



SE-4, 20 FEB 2025 to 20 MAR 2025

SE-4, 20 FEB 2025 to 20 MAR 2025

ELEV 483 **D** TDZE 481



CATEGORY	A	B	C	D
S-ILS 27		788- $\frac{7}{8}$	307 (400- $\frac{7}{8}$)	
S-LOC 27	1040-1	559 (600-1)	1040-1 $\frac{5}{8}$	559 (600-1 $\frac{5}{8}$)
C CIRCLING	1040-1 557 (600-1)	1080-1 597 (600-1)	1160-2 677 (700-2)	1360-2 $\frac{3}{4}$ 877 (900-2 $\frac{3}{4}$)

MIRL Rwy 9-27 **0**
REIL Rwy 9 and 27 **0**