

APP CRS **004°**
 Rwy Idg **3599**
 TDZE **620**
 Apt Elev **629**

RNAV (GPS) RWY 36

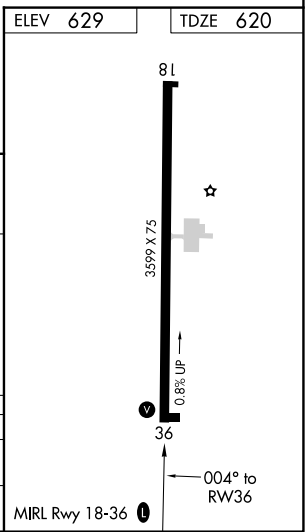
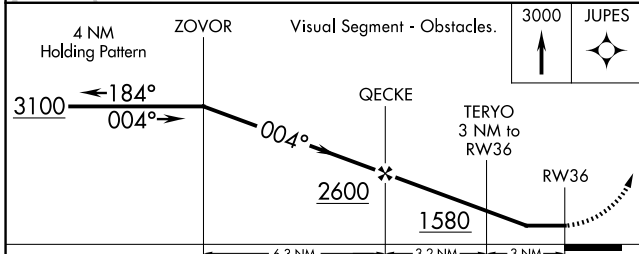
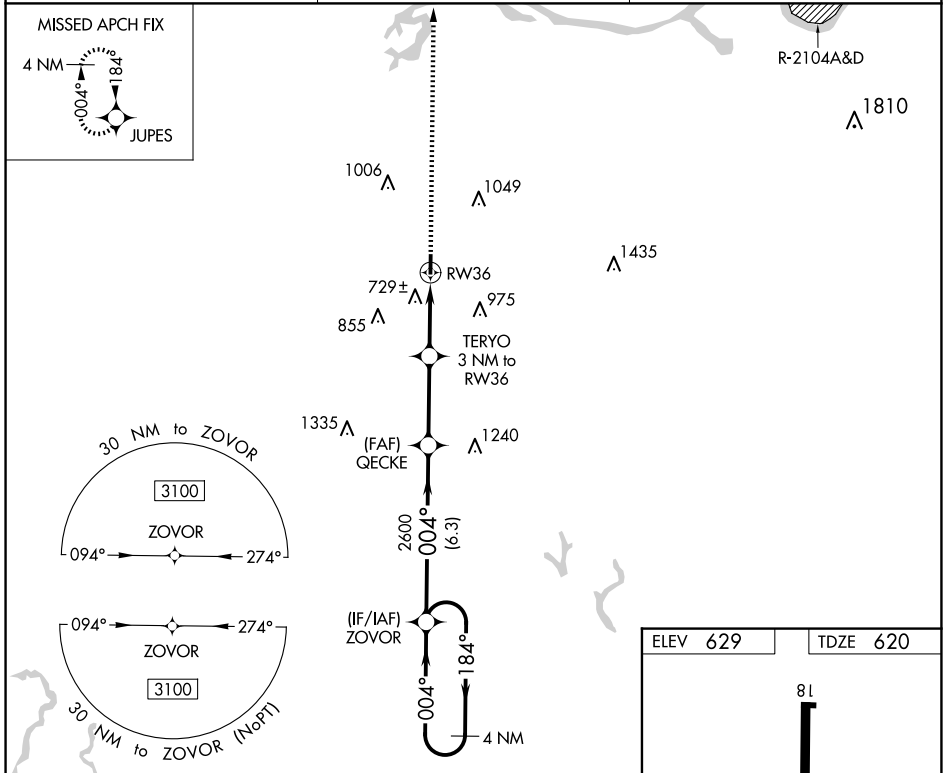
HARTSELLE/MORGAN COUNTY RGNL (5M \emptyset)

RNP APCH.

Procedure NA at night. Rwy 36 helicopter visibility reduction below 1 SM NA.
 Use Huntsville Intl-Carl T Jones Fld altimeter setting; when not received, use Cullman altimeter setting and increase all MDA 40 feet.

MISSED APPROACH: Climb to 3000 direct JUPES and hold.

HSV ATIS **121.25** HUNTSVILLE APP CON* **118.05 239.0** UNICOM **122.8 (CTAF)**



CATEGORY	A	B	C	D
LNVA MDA	1020-1	400 (400-1)	1020-1 $\frac{1}{8}$ 400 (400-1 $\frac{1}{8}$)	NA
CIRCLING	1120-1 491 (500-1)	1260-1 631 (700-1)	1520-2 $\frac{3}{4}$ 891 (900-2 $\frac{3}{4}$)	NA

SE-4, 20 FEB 2025 to 20 MAR 2025

SE-4, 20 FEB 2025 to 20 MAR 2025