

WAAS CH 97707 W12A	APP CRS 119°	Rwy Idg TDZE Apt Elev	5500 2431 2432
--	------------------------	-----------------------------	---

RNAV (GPS) RWY 12

CALDWELL EXEC (EUL)

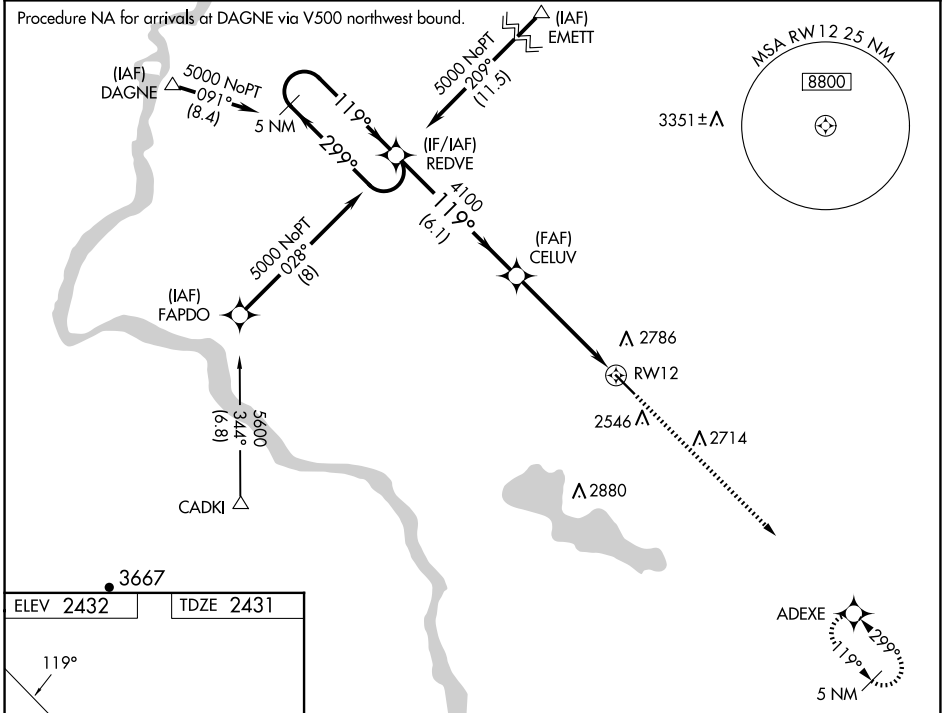
RNP APCH-GPS.

Procedure NA at night. Rwy 12 helicopter visibility reduction below 1 SM NA.

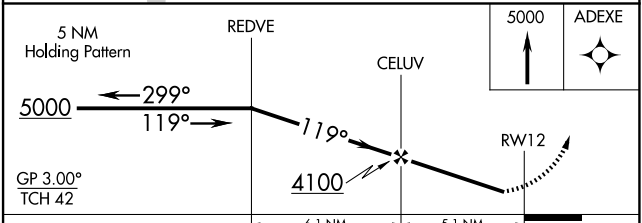
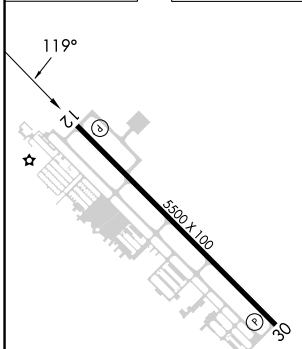
Baro-VNAV NA when using Boise altimeter setting. For uncompensated Baro-VNAV systems, LNAV/VNAV NA below -19°C or above 44°C. When local altimeter setting not received, use Boise altimeter setting and increase all DA/MDA 120 feet and all visibilities ½ mile.

MISSED APPROACH: Climb to 5000 direct ADEXE and hold.

AWOS-3PT 135.075	BIG SKY APP CON 119.6 269.4	UNICOM 123.0 (CTAF) 0
----------------------------	---------------------------------------	---------------------------------



ELEV 2432	TDZE 2431
-----------	-----------



CATEGORY	A	B	C	D
LPV DA		2700-1	269 (300-1)	
LNAV/VNAV DA		2994-2	563 (600-2)	
LNAV MDA	2840-1	409 (500-1)	2840-1½	409 (500-1½)

NW-1, 20 FEB 2025 to 20 MAR 2025

NW-1, 20 FEB 2025 to 20 MAR 2025