

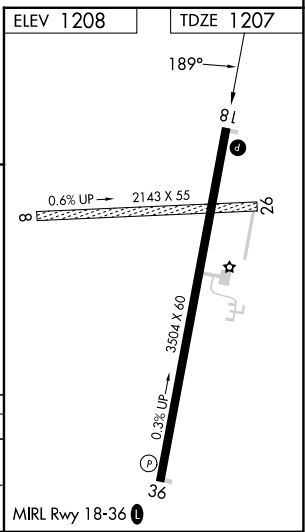
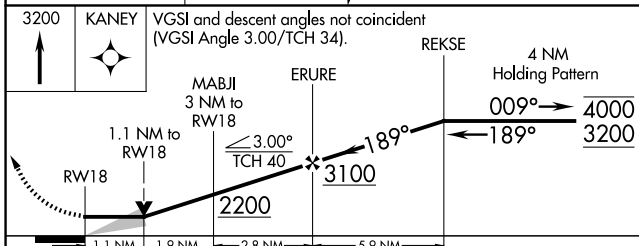
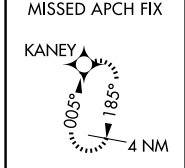
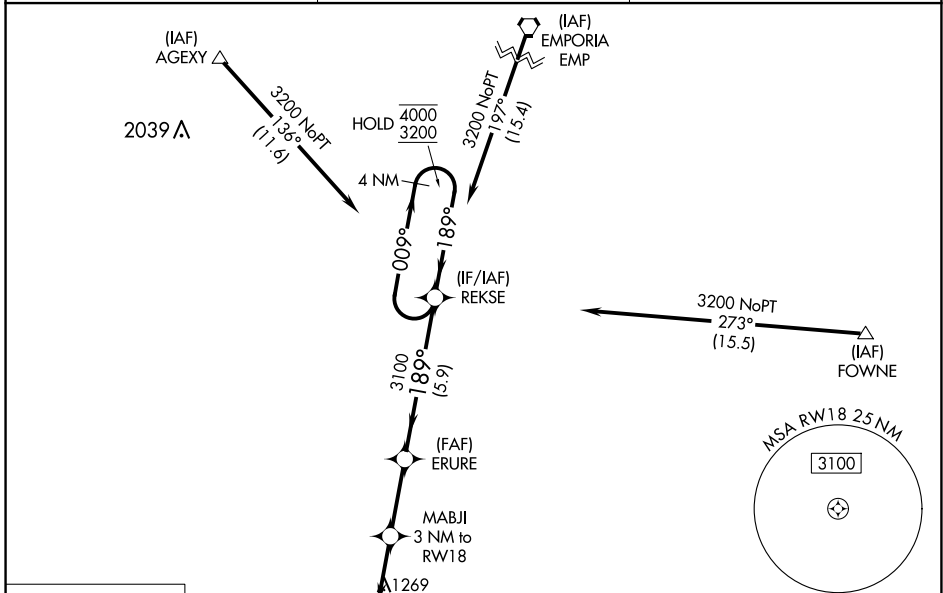
APP CRS	Rwy Idg	3504
189°	TDZE	1207
	Apt Elev	1208

RNAV (GPS) RWY 18

LT WILLIAM M MILLIKEN (13K)

RNP APCH - GPS.	MISSED APPROACH: Climb to 3200 direct KANEY and hold.
<p>⚠ Circling NA to Rwys 8 and 26. VDP NA when using Emporia altimeter setting. When local altimeter setting not received, use Emporia altimeter setting and increase all MDAs 80 feet and LNAV Cat C visibility ¼ SM, Circling Cat C visibility ¼ SM.</p>	

AWOS-3PT 120.975	KANSAS CITY CENTER 120.2 323.2	UNICOM 122.8 (CTAF) 0
----------------------------	--	---------------------------------



CATEGORY	A	B	C	D
LNAV MDA	1600-1	393 (400-1)	1600-1½ 393 (400-1½)	NA
CIRCLING	1640-1 432 (500-1)	1660-1 452 (500-1)	2060-2½ 852 (900-2½)	NA

NC-2, 20 FEB 2025 to 20 MAR 2025

NC-2, 20 FEB 2025 to 20 MAR 2025