

| | | | |
|--|------------------------|-----------------------------|---|
| VORTAC EMP 112.8 Chan 75 | APP CRS 187° | Rwy Idg TDZE Apt Elev | 3504 1207 1208 |
|--|------------------------|-----------------------------|---|

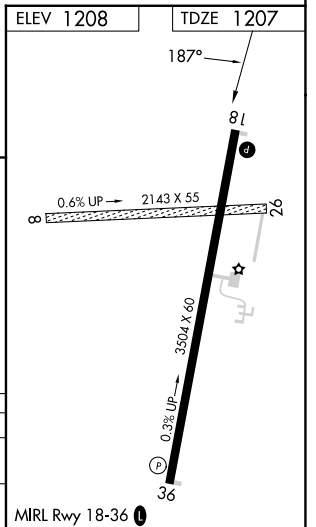
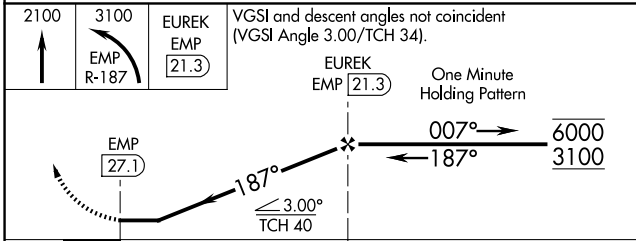
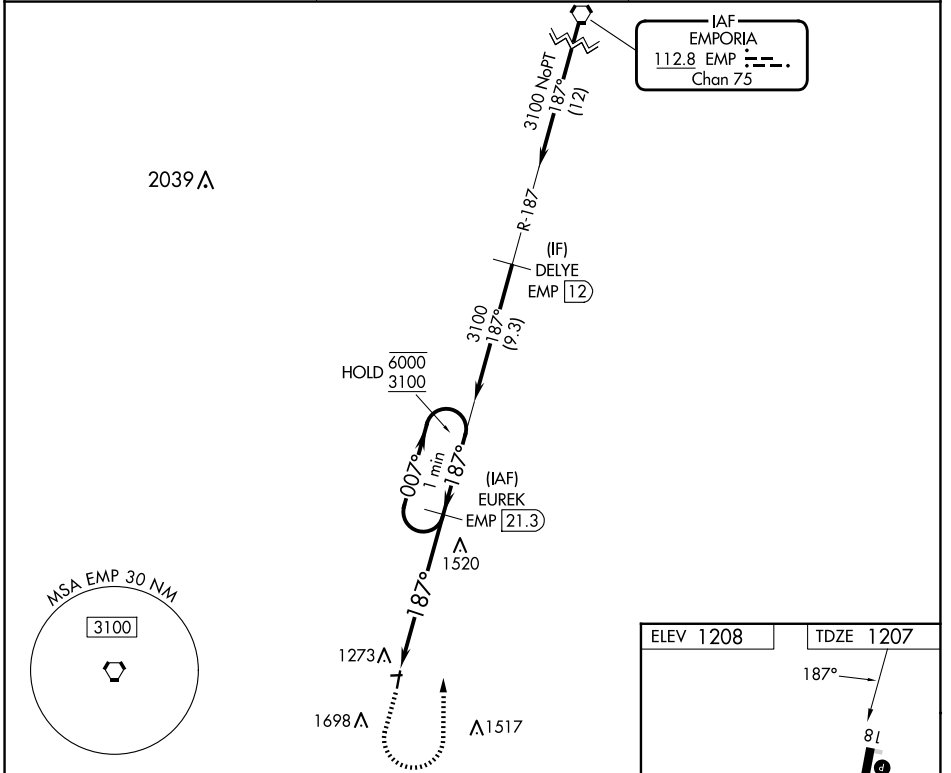
VOR RWY 18
LT WILLIAM M MILLIKEN (13K)

DME required.

⚠ Circling NA to Rwys 8 and 26. When local altimeter setting not received, use Emporia altimeter setting: increase all MDAs 80 feet and S-18 Cat C visibility $\frac{1}{4}$ SM, Circling Cat C visibility $\frac{1}{4}$ SM.

MISSED APPROACH: Climb to 2100 then climbing left turn to 3100 on EMP R-187 to EUREK/21.3 DME and hold.

| | | |
|----------------------------|--|---------------------------------|
| AWOS-3PT 120.975 | KANSAS CITY CENTER 120.2 323.2 | UNICOM 122.8 (CTAF) 0 |
|----------------------------|--|---------------------------------|



| CATEGORY | A | B | C | D |
|----------|--------------------|---|---|----|
| S-18 | 1820-1 613 (700-1) | | 1820-1 $\frac{3}{4}$ 613 (700-1 $\frac{3}{4}$) | NA |
| CIRCLING | 1820-1 612 (700-1) | | 2060-2 $\frac{1}{2}$ 852 (900-2 $\frac{1}{2}$) | NA |

NC-2, 20 FEB 2025 to 20 MAR 2025

NC-2, 20 FEB 2025 to 20 MAR 2025