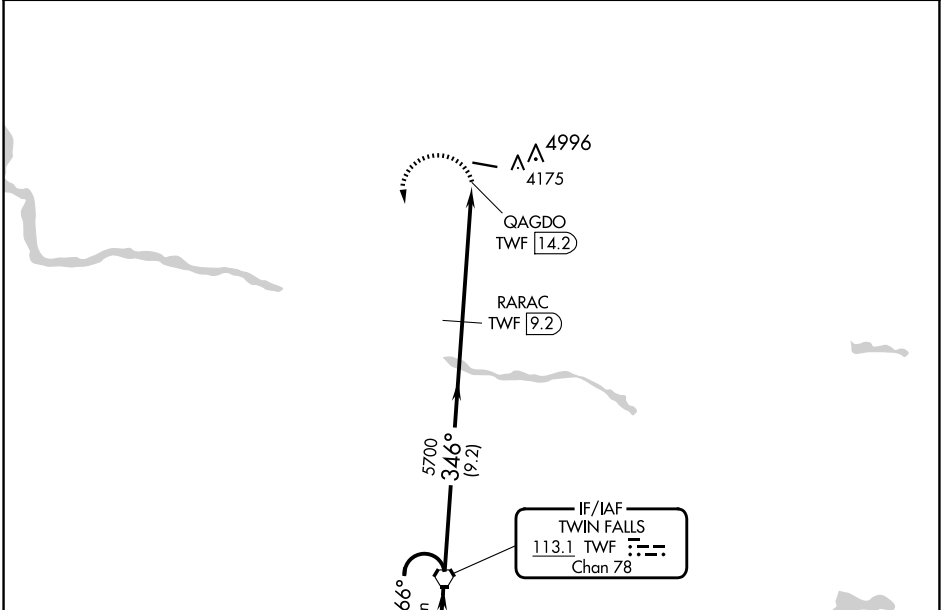


VORTAC TWF <b>113.1</b> Chan <b>78</b>	APP CRS <b>346°</b>	Rwy Idg TDZE Apt Elev	<b>N/A</b> <b>N/A</b> <b>4053</b>
--	------------------------	-----------------------------	---

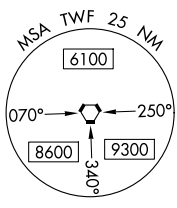
**VOR-A**  
JEROME COUNTY (JER)

DME required.		MISSED APPROACH: Climbing left turn to 8000 direct TWF VORTAC and hold, continue climb-in-hold to 8000.
<b>▽</b> <b>▲</b>	Circling NA north of Rwy 9-27.	
ASOS <b>135,225</b>	TWIN FALLS APP CON* <b>126.7 353.75</b>	UNICOM <b>122.8 (CTAF) 0</b>

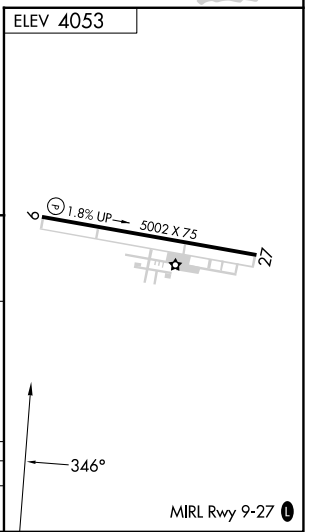


NW-1, 20 FEB 2025 to 20 MAR 2025

NW-1, 20 FEB 2025 to 20 MAR 2025



NoPT for arrival on TWF VORTAC airway radials 097 CW 191.



One Minute Holding Pattern	TWF VORTAC		8000	TWF
	RARAC TWF 9.2			
	QAGDO TWF 14.2			
	5700			
	9.2 NM		5 NM	
CATEGORY	A	B	C	D
<b>C</b> CIRCLING	4540-1 487 (500-1)	4580-1 527 (600-1)	4580-1½ 527 (600-1½)	4620-2 567 (600-2)