

WAAS CH 63246 W26A	APP CRS 255°	Rwy Idg TDZE Apt Elev	4903 308 309
--	------------------------	-----------------------------	---

RNAV (GPS) RWY 26

BURKE COUNTY (B.X.G)

RNP APCH - GPS.

▼ Rwy 26 helicopter visibility reduction below 3/4 SM NA.
▲ NA Baro-VNAV NA. Use AGS altimeter setting.

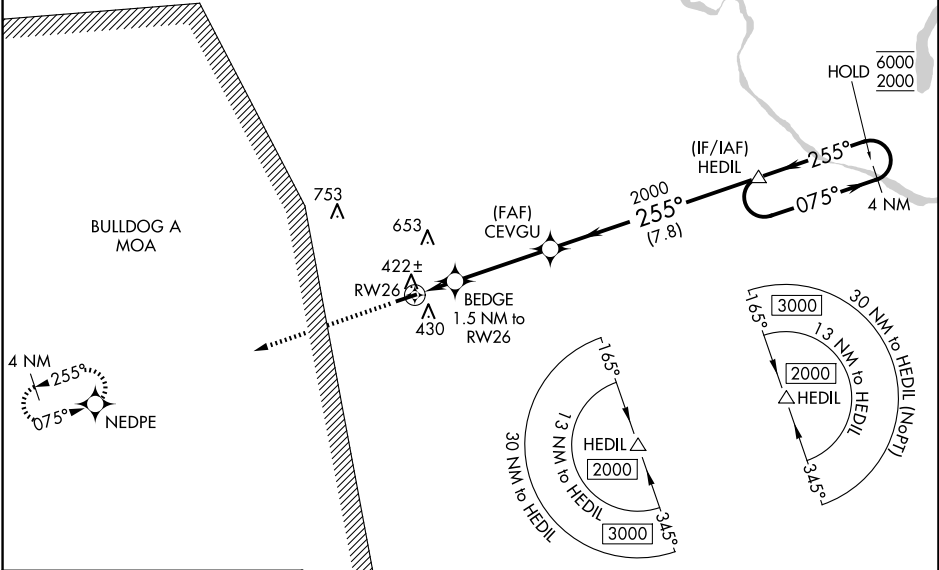
MISSED APPROACH: Climb to 3000 direct NEDPE and hold, continue climb-in-hold to 3000.

AGS ASOS
132.75

AUGUSTA APP CON*
126.8 270.3

CTAF
122.9

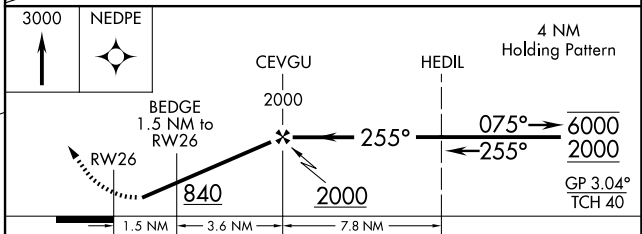
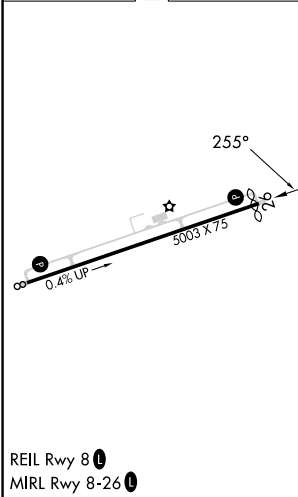
▲ 1889



SE-4, 20 FEB 2025 to 20 MAR 2025

SE-4, 20 FEB 2025 to 20 MAR 2025

ELEV 309 **D** TDZE 308



CATEGORY	A	B	C	D
LPV DA		666-1 358 (400-1)		
LNAV/VNAV DA		676-1 368 (400-1)		
LNAV MDA	760-1 452 (500-1)		760-1 ³ / ₈ 452 (500-1 ³ / ₈)	
CIRCLING	820-1 511 (600-1)	900-1 591 (600-1)	1080-2 ¹ / ₄ 771 (800-2 ¹ / ₄)	1180-3 871 (900-3)

REIL Rwy 8 **●**
MIRL Rwy 8-26 **●**