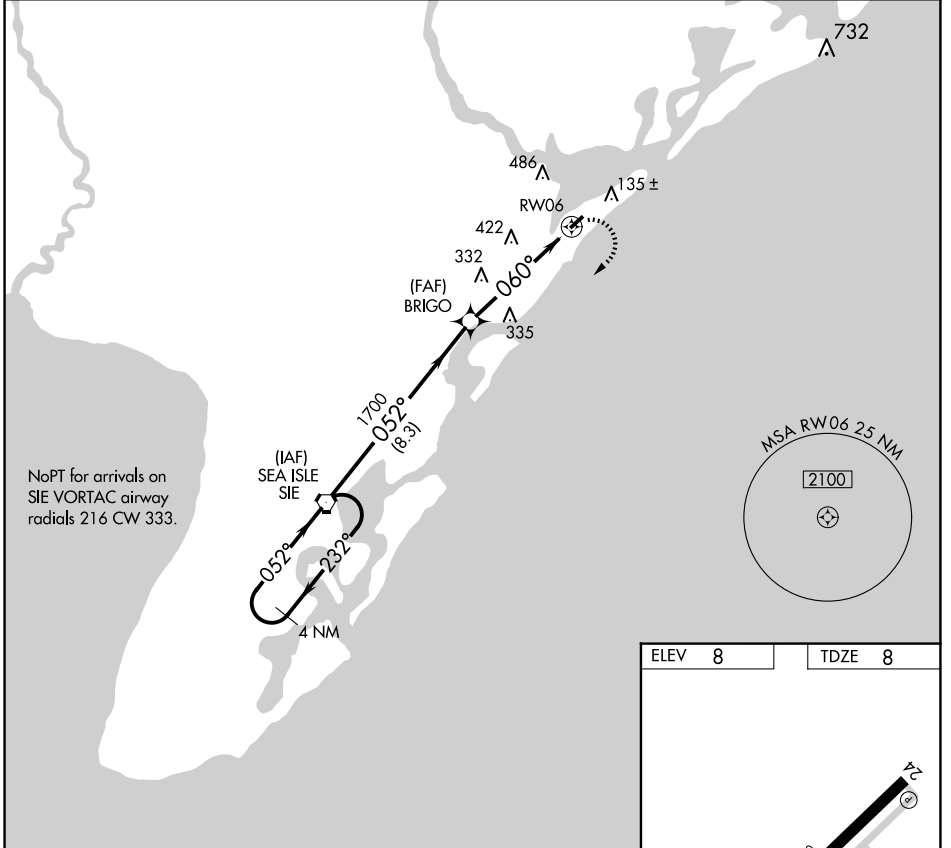


APP CRS	Rwy Idg	2972
060°	TDZE	8
	Apt Elev	8

GPS RWY 6

OCEAN CITY MUNI (26N)

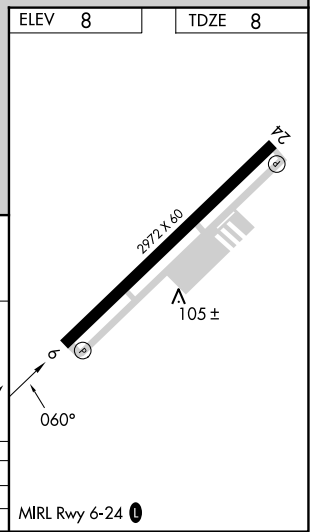
▲ NA When local altimeter setting not received, use Atlantic City altimeter setting.		MISSED APPROACH: Climbing right turn to 2000 direct SIE VORTAC and hold.	
AWOS-AV 119.775	ATLANTIC CITY APP CON 124.6 327.125	CLNC DEL 133.6	UNICOM 122.7 (CTAF) 0



NE-2, 20 FEB 2025 to 20 MAR 2025

NE-2, 20 FEB 2025 to 20 MAR 2025

NoPT for arrivals on SIE VORTAC airway radials 216 CW 333.



4 NM Holding Pattern	SIE VORTAC	2000	SIE
2000 ← 232°	052° →	1700	060°
8.3 NM		5 NM	
CATEGORY	A	B	C
S-6	680-1 672 (700-1)		NA
CIRCLING	680-1 672 (700-1)		NA