

| | | | |
|--|------------------------|-----------------------------|---|
| WAAS CH 49133 W36A | APP CRS 001° | Rwy Idg TDZE Apt Elev | 5003 164 164 |
|--|------------------------|-----------------------------|---|

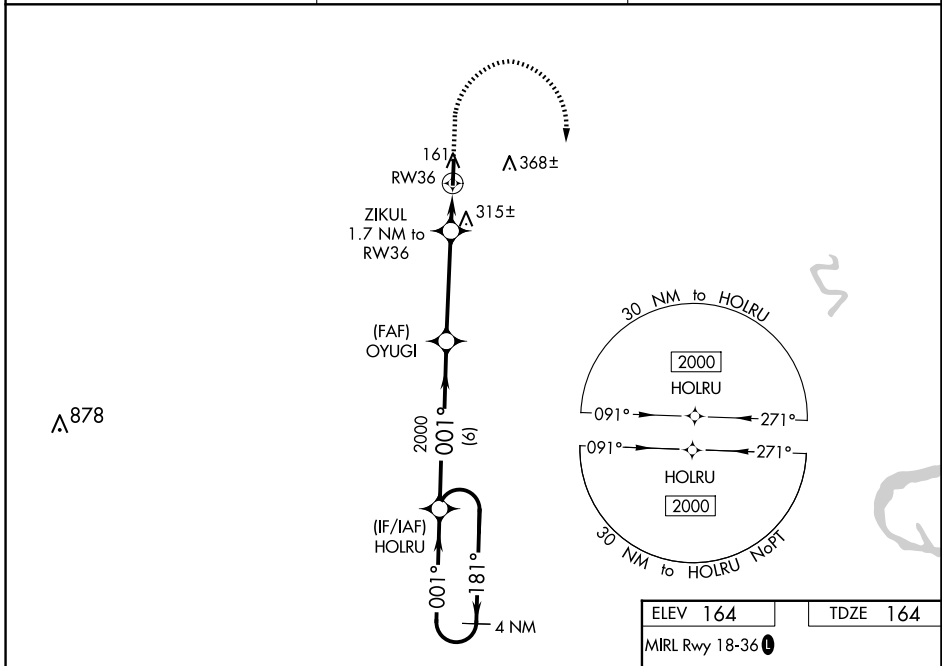
RNAV (GPS) RWY 36

BILLY FREE MUNI (ØMØ)

⚠ Baro-VNAV NA. DME/DME RNP-0.3 NA. Use Pine Bluff altimeter setting, when not received use Greenville, MS altimeter setting and increase all DA 22 feet and all MDA 40 feet; increase LPV all Cats visibility 1/8 mile and Circling Cat C visibility 1/4 mile. Helicopter visibility reduction below 3/4 SM NA.

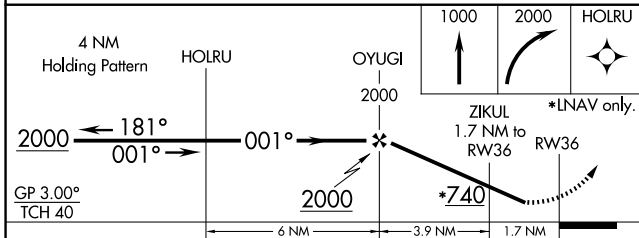
MISSED APPROACH: Climb to 1000 then climbing right turn to 2000 direct HOLRU and hold.

| | | |
|----------------------------|---|---------------------------------|
| PBF ASOS 120.775 | MEMPHIS CENTER 135.875 269.35 | UNICOM 122.8 (CTAF) Ø |
|----------------------------|---|---------------------------------|

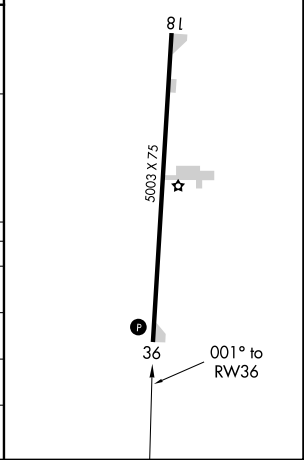


SC-1, 20 FEB 2025 to 20 MAR 2025

SC-1, 20 FEB 2025 to 20 MAR 2025



| | |
|------------------|----------|
| ELEV 164 | TDZE 164 |
| MIRL Rwy 18-36 Ø | |



| CATEGORY | A | B | C | D |
|-------------------|-----------|-----------------|------------------------------|----|
| LPV DA | 481-1 | 317 (400-1) | | NA |
| LNAV/VNAV DA | 492-1 1/8 | 328 (400-1 1/8) | | NA |
| LNAV MDA | 640-1 | 476 (500-1) | 640-1 3/8 476 (500-1 3/8) | NA |
| C CIRCLING | 780-1 | 616 (700-1) | 800-1 3/4 636 (700-1 3/4) | NA |